

One Hundred Croatian Archeo- logical Sites

- Batina
- Bijelo Brdo
- Biograd
- Biskupija
- Brezovljani
- Bribir
- Brijuni
- Bubijeva jama
- Budinjak
- Cetina
- Čakovec
- Dalj
- Danilo
- Daraž
- Drljanovac
- Duboka
- Dubrovnik
- Gardun
- Glavat
- Goričan
- Grapčeva špilja
- Gudovac
- Ilok
- Ilovik
- Ivinj
- Ivoševci
- Jalžabet
- Josipovo
- Kaptol
- Kopačina
- Koprivnička Rijeka
- Krapina
- Kuzelin
- Lobor
- Ljubač
- Mačkovac
- Malo Korenovo
- Martijanec
- Monkodonja
- Mujina pećina
- Muline
- Nadin
- Nezakcij
- Nin
- Nova Gradiška
- Nova Rača
- Novačka
- Novalja
- Novigrad na Savi
- Omišalj
- Osekovo
- Osijek
- Osor
- Otrnci
- Ozalj
- Pepelana
- Podgrađe
- Polače
- Poreč
- Prozor
- Pula
- Pupičina peć
- Rijeka
- Rudina
- Saloš
- Sarvaš
- Sisak
- Skradin
- Slavonski Brod
- Solin
- Sopot
- Spila
- Split
- Srma
- Stari Grad
- Stari Mikanovci
- Sveti Martin na Muri
- Sveti Petar Ludbreški
- Šćitarjevo
- Štrbinci
- Topusko
- Trogir
- Turska kosa
- Udbina
- Varaždinske Toplice
- Vela spila
- Vela svitnja
- Vid
- Vindija
- Vinkovci
- Vis
- Vlačka mala
- Vučedol
- Vukovar
- Zadar
- Zadubravljje
- Zagreb
- Zdenci
- Zvonimirovo
- Žirje

Leksikografski zavod
Miroslav Krleža

One Hundred Croatian Archeological Sites



LEKSIKOGRAFSKI ZAVOD MIROSLAV KRLEŽA

ONE HUNDRED CROATIAN ARCHEOLOGICAL SITES

EDITOR

Aleksandar Durman

EDITORIAL COMMITTEE

Jacqueline Balen, Ana Bobovec, Božidar Čečuk, Hermine Göricke-Lukić, Damir Kliškić, Marija Kolega,
Romana Menalo, Marko Mendušić, Kristina Mihovilić, Hrvoje Potrebica, Ivan Šarić

EXECUTIVE EDITOR

Ozana Martinčić

ARTISTIC EDITOR

Andrea Srečković



Primorje-Gorski Kotar County

Primorje-Gorski Kotar County (3590 km²) encompasses the coastal territory of Rijeka Bay with its hinterland, the island area of Cres, Lošinj, Krk, and Rab, and a part of Gorski Kotar (the Mountain District) to the upper course of the Kupa River.

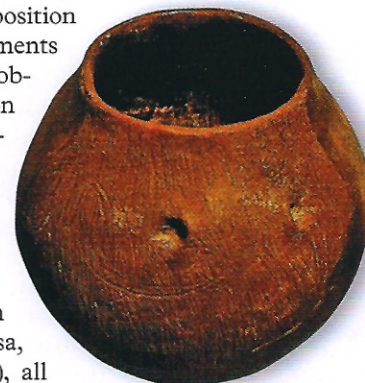
The dynamic process of all the changes that took place during the end of the Pleistocene and the beginning of the Holocene over the broader territory of the Adriatic can be observed at many cavern sites, especially in the area of Učka and Čićarije mountains, in the hinterland above Rijeka and Vinodol, and in the area of Lokve. The only multilayered site in the open that is known is at Lopar on the island Rab, and it shows that this area was inhabited from the upper Paleolithic and Mesolithic to the Early Neolithic. In the Neolithic the caverns at Draga Baščanska (Vorganska Cave) and Vrbnik on Krk were also used. From that time there are known settlements above ground and hillforts from the Rijeka area as well as from the islands of Cres (Punta Križa) and Lošinj (Čunjski). Through finds from tumuli, e.g. from Krmpote in Vinodol, Srem on Cres or Garica on Krk, the development of the Chalcolithic can be observed.

The most important multilayered sites in this region are Vela Jama (Great Pit) on Lošinj, used from the Middle Paleolithic to the Iron Age, Jami na Sredi on Cres, used from the upper Paleolithic to the Late Iron Age, and Oporovina above Medveja, which was in use from the upper Paleolithic to the Bronze Age as well as in late Classical Antiquity and the Early Middle Ages.

The hillfort settlements are much better studied; there are over a hundred of them, and they were the typical form of settlement during the Bronze and Iron ages. At that time three ethnicities lived on the territory of the Primorje-Gorski Kotar County: Liburnians, Japodes and Colapiani, while the hinterland of Rijeka was inhabited by mixed ethnic communities about which there are written sources in classical literature. As settlements with proto-urban features, the hillforts were particularly important. Thanks to their position they oversaw a large coastal and mainland area, and there is hardly an area where they have not been noted and researched. Hillforts outstanding for their special qualities and good preservation are: Osap in Novi Vinodolski, Pukonjina (markedly round in form) and Skulka (with its special entry system) on Cres, then Veli Kaslir in Punat (with megalithic constructions) and Glavica in Baška on Krk as well as Kaštelin in Kapor and Trbušnjak in Lopar on Rab. Several prehistoric abodes have also been researched, the best known among them being the ones at Vazminec on Cres.

The caverns continued to be used, as temporary living places, and Podosojna Cave near Mošćenička Draga is notable for its attractive and accessible position and its range of finds. Necropolises were located beside settlements and roads. The ones at Veli Mišinac in Kastav, Grobišće in Grobnik, Lubenice on Cres, Baška on Krk and Kaštelina in Lopar on Rab are outstanding for the richness of their finds. Valuable examples of grave goods come from tumuli (Stolnič near Crikvenica, Grižane in Vinodol, Garica on Krk, Gromačica on Rab) and among the hoards the most impressive is the hoard of jewelry from Baška on Krk.

In the Classical period many cities grew in the area. Aside from Tarsatica (Rijeka), Apsorus (Osor on Cres), and Fulfinum (Omišalj on Krk), other municipal centers were Crexi (Crepsa, Cres), Caput insulae (Beli), Curicum (Krk) and Arba (Rab), all founded in the Julian-Claudian dynasty, as parts of the province of Dalmatia. Along the main road Via publica Aquileia-Tarsatica



OPOROVINA ABOVE MEDVEJA,
ceramic vessel, Chalcolithic



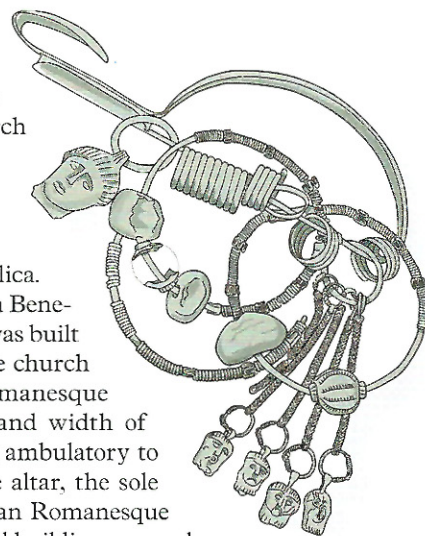
there arose a system of smaller settlements, fortifications and way stations (Castrum – Kastav, Volcra – Bakar, Ad Turres – Crikvenica, Grobnik), and traditionally there were necropolises along with them. The most beautiful grave goods from that period come from the necropolis at Grobišće (Grobnik), Poljana (Bakar) and Novi Vinodolski. In the areas outside the perimeter of the cities and settlements there were agricultural complexes (*villae rusticae*). They were erected in great numbers in the coastal and island area in the period from the early Empire to Late Antiquity. They were usually small establishments for the production of wine and oil, as evidenced by the excavated and in part restored architectural finds along the Adriatic.

In the 4th cent. pressures and penetrations of new peoples into the territory of the Roman Empire began, which led to the growth of fortified settlements like Grobnik or Lopar in Novi Vinodolski. Also from that time are the remains of the fortified system, the limes, which protected the entrances into Italy from the onslaught of the so-called barbaric peoples. It stretched from Tarsatica across Grobnik Field to Prezid in Gorski Kotar.

On the other hand, on the coastal and island territory the existing cities were being rebuilt. There are singular remains of Byzantine coastal fortifications, in particular on Krk and Rab. The Byzantine castrum on the little island Palacol is outstanding for its good preservation. The erection of basilica churches bears witness to the spread of Christianity. The Church of St. Martin near Martinšćica on Cres is the only building with a cruciform ground plan in this area. Aside from the early Christian complex at Mirine, there are outstanding ruins of a three-apsed basilica of the 5th-6th cent. built on the foundations of Roman baths, at the place of today's Cathedral of the Assumption of Mary in Krk, built in the 12th cent. The consecrated building next to the chapel of St. Mark in Baška can also be counted among them. In the Romanesque church of St. Mary the Great (formerly a cathedral) on Rab, early Christian substructures have likewise been examined, while the ciborium above the main altar from the 9th cent. is the sole ex-

ample of a Romanesque altar canopy preserved in situ on the Croatian coast. The church of St. John the Evangelist in Rab was likewise originally an early Christian basilica.

In the 11th century a Benedictine monastery was built alongside it, and the church was redone in Romanesque forms. The shape and width of the apse allowed an ambulatory to be built around the altar, the sole one in the Dalmatian Romanesque sphere. Smaller sacral buildings were also erected in the surrounding spaces in the late phase of Byzantine rule. On Rab there was



BAŠKA ON KRK, Liburnian silver jewelry, 3rd – 2nd cent. BC (sketch)

JADRANOVO, *villa rustica*



STRANČE – GORICA, old Croatian jewelry, 8th–9th cent.

the complex of fortifications and the church of Sts. Cosmas and Damian above Barbat and the smaller church of St. Katherine, on Krk the churches of St. Peter in Rudine, St. George above Vrbnik and St. Nicholas in Korintija, and on Oruda the Church of St. John.

At the time of the Slavic invasions and the immigration of the Croats at the end of the 8th cent. it was precisely through Primorje–Gorski Kotar County that the boundary ran dividing the power over the territory between the Frankish state and the Byzantine Empire. The boundary was legally recognized in 812. On account of this situation, on the late Classical refuges and hillforts, many castles were built, especially throughout Vinodol (Hreljin, Drivenik, Bribir, Grižane, Badanj), which also were to become the westernmost territories of the new Croatian state with the centers of the Croatian districts. The settlement in Gerovo, center of Gorski Kotar, was also subordinate to administration from Vinodol from the 11th cent. on. The old Croatian cemeteries of Vinodol, Veli Dol and Stranč-Gorica show the succession of influences from the Byzantine world and the Carolingian cultural sphere. The cemetery at Stranč was used from the end of the 8th cent. to the 11th cent. and shows those differences in luxurious clothing, grave goods, and in the very ritual and way of burial. Such relations also influenced the course of the spread of Christianity among the

newly arrived Croatian population, and the richness of the churchly heritage is evident in the architecture of the little old Croatian churches with simple ground plans decorated with interlace reliefs and the varied Glagolitic heritage. On Krk there are several of them – the church of St. Donat near Punat, St. Krševan (Grisogonus or Chrysogonus) in Milohnići, and St. Krševan near Glavotok. From Cres comes the oldest monument written in Glagolitic, the Valun gravestone from the 11th cent. The most valuable preserved early Romanesque building on the territory of the Kvarner Bay is the church of St. Peter in the old Slavic settlement in Supetarska Draga on Rab, which belonged to the former Benedictine abbey. Thanks to the Benedictine revitalization of

Christianity numerous abbeys were built. In addition to the abbey of St. Peter in Osor we may also cite the abbeys of St. Michael on Susak, St. Peter on Ilovik, St. Lawrence on Krk, and St. Andrew on Rab. The Benedictine complex in Jurandvor in Baška on Krk, which arose out of a classical rural building, is outstanding. The little church of St. Lucy itself is an example of a rare type of old Croatian sacral architecture with its altar screen decorated with the so-called Baščanska Ploča or Baška Tablet. The tablet originated around 1100 and is one of the oldest documents carved in stone and written in Glagolitic letters in the Croatian language (today it is displayed in the Croatian Academy of Sciences and Arts [HAZU] in Zagreb).

BAŠČANSKA PLOČA, Baška Tablet, ca. 1100



KAMPOR ON RAB, Kaštelina hillfort

