

Single-channel Sparse Nonnegative Blind Source Separation Method for Automatic 3D Delineation of Lung Tumor in PET Images

Ivica Kopriva, *Senior Member IEEE*, Wei Ju, Bin Zhang, Fei Shi, Dehui Xiang, Kai Yu, Ximing Wang, Ulas Bagci and Xinjian Chen*, *Senior Member IEEE*

Abstract—In this paper, we propose a novel method for single-channel blind separation of non-overlapped sources and, to the best of our knowledge, apply it for the first time to automatic segmentation of lung tumors in Positron Emission Tomography (PET) images. Our approach first converts 3D PET image into a pseudo multichannel image. Afterwards, regularization free sparseness constrained nonnegative matrix factorization is used to separate tumor from other tissues. By using complexity based criterion, we select tumor component as the one with minimal complexity. We have compared the proposed method with threshold based on 40% and 50% maximum standardized uptake value (SUV), graph cuts (GC), random walks (RW) and affinity propagation (AP) algorithms on 18 non-small cell lung cancer datasets with respect to ground truth provided by two radiologists. Dice similarity coefficient averaged with respect to two ground truths is: 0.78 ± 0.12 by the proposed algorithm, 0.78 ± 0.1 by GC, 0.77 ± 0.13 by AP, 0.77 ± 0.07 by RW, and 0.75 ± 0.13 by 50% maximum SUV threshold. Since the proposed method achieved performance comparable with interactive methods, considering the unique challenges of lung tumor segmentation from PET images, our findings support possibility of using our fully automated method in routine clinics. The source codes will be available at www.mipav.net/English/research/research.html.

Index Terms—Single-channel blind source separation, nonnegative matrix factorization, sparseness, lung tumor delineation, positron emission tomography (PET).

I. INTRODUCTION

LUNG tumor is the main cause of cancer death in men and the second main cause of cancer death in women [1]. The

Manuscript received ????. This work has been supported in part by: bilateral Chinese-Croatian grant "Dealination of lung tumor through nonlinear decomposition of PET/CT image"; the Croatian Science Foundation grant "Structured Decompositions of Empirical Data for Computationally-Assisted Diagnoses of Disease"; the National Basic Research Program of China (973 Program) under Grant 2014CB748600; the National Natural Science Foundation of China (NSFC) under Grant 81371629. Asterisk indicates corresponding author.

I. Kopriva is with Division of Electronics, Ruđer Bošković Institute, Zagreb, Croatia (ikopriva@irb.hr). W. Ju, F. Shi, D. Xiang, K. Yu and X. Chen are with the School of Electrical and Information Engineering, Soochow University, Suzhou City, 215006, China (e-mail: yehesu@163.com, shifei@suda.edu.cn, yukai@qq.com, xiangdehui@suda.edu.cn, xjchen@suda.edu.cn). B. Zhang and X. Wang are with the first affiliated hospital of Soochow University (e-mail: zbnucimd@126.com, wangximing1998@163.com). U. Bagci is with Center for Research in Computer Vision, University of Central Florida (bagci@crvc.ucf.edu).

overall five-year survival rate of lung cancer for all stages is only approximately 15%. However, if the primary tumor is resectable, survival rate is improved [2], [3]. Accurate staging is critical to characterize tumors such as understanding the stage of the tumor or its suitability for resection. To this end, positron emission tomography (PET)-computed tomography (CT) are widely used [4]. CT provides anatomical information but it lacks metabolic information [5]. PET yields increased uptake of fluorodeoxyglucose (FDG) in tumor tissues relative to surrounding normal tissues. This is typical for non-small cell lung cancer (NSCLC) [3], [6]. On the other hand, NSCLC tumors show high regulation of glucose metabolism such that labeling glucose with FDG enables detectability of NSCLC [7]. Increased FDG uptake is often referred to as a "hot spot". Due to limited spatial resolution of PET images, the boundary of a tumor lesion usually appears fuzzy and indistinct. That is why tumor delineation using sole PET images is still considered suboptimal [8], [9], [10]. In this regard, Figure 1 illustrates difficulties associated with segmentation of lung tumor with complex shape and fuzzy boundary.



Fig. 1. Comparative results for a slice of PET study. Top row from left to right: input PET image, ground truth 1, ground truth 2, segmentation result obtained by proposed algorithm. Bottom row from left to right: segmentation results obtained by random walks, affinity propagation, graph cuts and thresholding based on 50% of maximum tumor FDG uptake.

Nevertheless, PET can detect sites of disease in non-enlarged lymph nodes within the thorax and in structures outside the thorax, which may not appear abnormal in CT images [3]. There has been increased research undertaken to improve accuracy of lung tumor delineation using PET [9], [11], [12]. One way to improve boundary definition is to combine PET and CT information and jointly segment boundaries from CT and PET [3], [8], [9], [10], [13]. Compared with segmentation results obtained by random walks (RW) [14], graph cuts (GC) [15], affinity propagation (AP) [16], [17] and thresholding based on 50% of the maximum tumor FDG uptake (TH50), the

method proposed herein achieves the same performance as GC and better performance than RW which are interactive methods. It is also better than AP method that requires postprocessing. Proposed method yields comparable results as RW and GC co-segmentation method in [13] that uses both PET and CT modalities. However, while method in [13] is interactive, proposed method is fully automatic.

There is no PET image segmentation method that is optimal for all applications [9]. Methods that segment PET image only are divided in the following groups: manual segmentation, thresholding-based, region-based, stochastic and learning-based [9]. Manual segmentation is inefficient and highly subjective with substantial intra- and inter-operator disagreement rates [18], [19], [9]. Thresholding is widely used in PET images due to its simplicity and good contrast of the PET images. Because of the large variability of pathologies, low resolution and uncertainty in fuzzy object boundaries, there is no consensus on the selection of a thresholding level [9]. The range of suggested thresholds is commonly between 40%-50% of the maximum tumor FDG uptake [19]-[22]. However, not always primary NSCLCs display highest FDG uptake and benign conditions such as pneumonia can also have high FDG uptake [6]. That is why a single threshold method is not considered satisfactory [23], [24], [9]. Many adaptive thresholding methods [25], [26], [9] and iterative thresholding strategies [27], [9] were developed to address the challenges of single thresholding methods. Although improvements were obtained, none of these strategies were generalized due to the need for developing more advanced and robust techniques.

Stochastic methods, as an alternative and more powerful methods, exploit differences between uptake regions and surrounding tissues statistically. In this category, three groups of methods are distinguished: mixture models based methods [28], [29], fuzzy locally adaptive Bayesian method [29], and clustering/classification of PET image intensities methods [16], [17], [30], [31]. Since clustering methods are grouping voxels according to chosen similarity metric, they are geometry independent and are, therefore, particularly useful when the shapes of the uptakes regions are non-convex with a heterogeneous background. Non-convex regions are quite common and that is cause of growing interest in the use of clustering methods to segment complex shapes uptake regions [9]. In particular, recent AP method was demonstrated to address difficult problem related to segmentation of the multi-focal uptake pattern in the PET image [16], [17]. The method proposed herein belongs to the class of clustering methods.

The region-based segmentation methods are using homogeneity of the intensities in the image for determining object boundaries [9]. In this group, graph-based methods were shown particularly more suitable for segmentation of PET images than other methods due to incorporation of *a priori* knowledge into segmentation process. That is accomplished by using foreground and background seeds specified by the user, or automatically, to locate objects in the image [9]. The two most prominent graph-based methods used for PET image segmentation are GC [15] and RW [16]. The advantage of RW

over GC is to be more robust against noise and weak boundaries. Despite automated seeding process [10], it is believed that human incorporation may still be necessary for some extreme cases [9]. A comprehensive review for PET segmentation methods can be found in [9].

Herein, we propose a method for automatic delineation of lung tumor from PET images. That is motivated with efforts to develop automatic segmentation methods as a substitute for time-consuming manual delineation performed by radiologists [32]. It is also motivated by the clinical cases which may not appear abnormal in CT images and only PET can detect such sites [3]. Furthermore, it is motivated by the non-convex shape of NSCLC what is hard to segment. As opposed to multivariate data analysis methods such as principal component analysis (PCA) [33] and independent component analysis (ICA) [34] which yield separated components with physically not interpretable mixed signs, the proposed method yields physically meaningful nonnegative separated components. Compared with sparseness regularized nonnegative matrix factorization (NMF) such as [35], the proposed method is free of regularization constant and that is important for automatic segmentation. The same comment applies to subspace clustering algorithms such as normalized cut (Ncut) [36], since Ncut can be implemented through orthogonality constrained NMF [37]. The automatic segmentation method proposed by us is based on blind source separation (BSS) approach [38]. It performs decomposition of 3D PET images into tumor and non-tumor parts. Since BSS is multivariate data analysis methodology, it assumes availability of a multichannel image. Because PET is a single-channel image, we first derive nonlinear transform that maps a single-channel PET image into pseudo multichannel. Afterwards, sparseness constrained nonnegative factorization of the pseudo multichannel image is performed to separate lung tumor from non-tumor tissues. In this regard, the proposed method belongs to class of clustering methods, whereat PET image is partitioned into sets of pixels (segments) corresponding to distinct objects (organs, tissues, etc.) based on their uptake level. Objects with distinct uptakes are represented by distinct segments. Lung tumor-related segment is identified automatically by means of criterion that combines measures of smoothness and entropy. Segmented image of the lung tumor is obtained through thresholding/binarization of the separated tumor component. Since lung tumor is separated from non-tumor tissues, a binarization threshold can be set to a low value to remove remnant parts of the non-tumor tissues, which are still present in separated tumor component. In particular, we demonstrate through leave-one-out cross validation on 18 NSCLCs patient datasets with manual delineation by two radiologists, that optimal values exist for both order of the nonlinear mapping transform and binarization threshold. Learned parameters can be set to predefined values, which makes the proposed 3D lung tumor delineation method automatic.

The remainder of the paper is organized as follows. Section II presents an overview of BSS approaches to multichannel image decomposition as well as overview of single-channel BSS algorithms. A novel single-channel BSS algorithm for

automatic 3D PET image decomposition is presented in Section III. Experimental results, in particular parameterization and comparative performance analysis of the proposed algorithm, are presented in Section IV. Discussion is presented in Section V, while conclusions are given in Section VI.

II. BACKGROUND AND RELATED WORK

A. BSS Approach to Multichannel Image Decomposition

The BSS approach to automatic image decomposition is based on multivariate data analysis [38]. We implicitly assume a multichannel image: $\mathbf{X} \in \mathbb{R}_{0+}^{N \times T}$ comprised of N vectorized intensity images, also known as (a.k.a.) mixtures in the BSS vocabulary, and T pixels (voxels), a.k.a. samples in the BSS vocabulary. BSS decomposition is based on multiplicative linear mixture model (LMM):

$$\mathbf{X} = \mathbf{A}\mathbf{S}, \quad (1)$$

where $\mathbf{A} \in \mathbb{R}_{0+}^{N \times M}$ stands for a basis (or mixing) matrix and $\mathbf{S} \in \mathbb{R}_{0+}^{M \times T}$ stands for a matrix of encoding coefficients. M rows of \mathbf{S} matrix, a.k.a. sources in the BSS vocabulary, are interpreted as partitions of the image occupied by particular tissue/organ. Thereby, presence of source m at pixel t is regulated by the encoding coefficients $\{s_{mt} \in \mathbb{R}_{0+}\}_{m,t=1}^{M,T}$. BSS decomposition effectively partitions an image into its constituent components. The term blind implies that decomposition of a multichannel image \mathbf{X} into the basis matrix \mathbf{A} and the source matrix \mathbf{S} is based on the multichannel image \mathbf{X} only. Linear representation (1) is customarily used to model a multichannel image in multispectral/hyperspectral imaging [39], [40], [41], [42], magnetic resonance imaging [43], and multi-phase CT imaging [44], [45]. Given a linear representation (1), and depending on constraints imposed on \mathbf{A} and \mathbf{S} , various methods are used to perform BSS-based image decomposition. PCA [33] constraints sources to be uncorrelated and Gaussian. ICA constraints sources to be statistically independent and non-Gaussian (at most one source is allowed to be Gaussian) [34], [46], [43], [44], [41]. PCA and ICA address over- and determined BSS problems in which number of sources cannot exceed number of mixtures available. Sparse component analysis (SCA) [47], [42], [48] constraints sources to be sparse. Thus, underdetermined BSS problems, characterized with more sources than mixtures, can be solved by SCA. Nonnegative matrix factorization (NMF) [49], [50] constraints sources to be nonnegative. As shown in [51], non-negativity is a natural constraint when applying factorization techniques to image related problems. NMF can also be combined with sparseness constraint [52], [35], [53] which enables solution of nonnegative underdetermined BSS problems.

B. Single-channel BSS

LMM-based representation of a single-channel image on the pixel-level becomes:

$$x_t = \sum_{m=1}^M a_m s_{mt} \quad \forall t = 1, \dots, T \quad (2)$$

where $\{a_m\}_{m=1}^M$ represent the mixing coefficients and $\{s_{mt}\}_{m,t=1}^{M,T}$ represent the encoding coefficients. Due to requirements of multiple mixtures, BSS methods are not applicable to single-channel. Single-channel BSS can be seen as limited (degenerative) case of underdetermined BSS where only one mixture is available [54]. In this regard, single-channel BSS is a highly ill-posed problem and hard constraints have to be imposed on source signals to enable their separation from a single-channel mixture. A single-channel mixture has to be transformed into pseudo multichannel mixture before some existing BSS algorithm such as ICA or NMF can be used. Several techniques were developed to convert single-channel mixture to pseudo multichannel [54]-[64] and, afterwards, to use some existing multivariate data analysis algorithms to perform BSS. For instance, Davies and James [54] assumed that source signals have disjoint spectral support and their method partitions single-channel time series to yield pseudo multichannel mixture, where an ICA algorithm was then applied to extract sources. Mijović *et. al.* [56] used empirical mode decomposition [65] to decompose single-channel mixture into intrinsic mode functions (IMFs) that stand for pseudo multichannel mixture. In order to be separated by ICA algorithms, sources of interest are required to be IMFs. In [57], wavelet transform is used to generate pseudo multichannel mixture from single-channel one. Thereby, mother wavelets have to be non-orthogonal and have to correspond to shapes of the sources we are interested in. Thus, this wavelet-ICA method is applicable to the separation of the specific source signals such as vibration signals [57], [58]. Many of single-channel BSS algorithms are derived for separation of acoustic signals by factorizing nonnegative spectrogram (magnitude of the short time Fourier transform) [59]-[63]. Ma *et. al.* [64] applied singular spectrum analysis (SSA) technique [66] to convert single-channel to pseudo multichannel mixture assuming that scalar time series is stationary. The BSS algorithm based on minimization of mutual information is applied to pseudo multi-channel mixture to separate source signals. The critical step in the SSA algorithm is determination of the length of the window in partitioning of scalar time series.

III. THE THRESHOLDED NONLINEAR NONNEGATIVE MATRIX UNDERAPPROXIMATION ALGORITHM

In this paper we propose a single-channel BSS algorithm for decomposition of vectorized single-channel intensity image into its constituent components. The flow chart diagram of proposed thresholded nonlinear nonnegative matrix underapproximation (TNNMU) algorithm is shown in Figure 2.

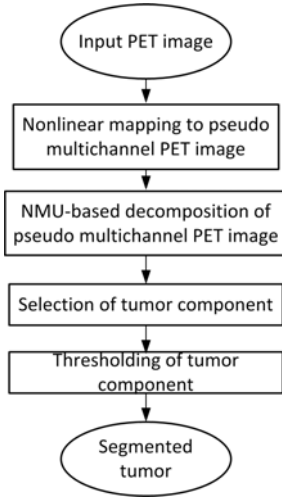


Fig. 2. Flow-chart diagram of proposed TNNMU algorithm.

It is assumed by the TNNMU algorithm that components have dominantly disjoint spatial support. Within the context of the present paper, we are interested in decomposition of a 3D PET image tensor $\underline{\mathbf{X}} \in R_{0+}^{I_1 \times I_2 \times I_3}$ comprised of I_3 slices of the size $I_1 \times I_2$ pixels. Thus, a single-channel PET image is obtained by unfolding 3D tensor $\underline{\mathbf{X}}$ into row vector $\mathbf{x} \in R_{0+}^{I_1 \times I_2 \times I_3}$ comprised of $T=I_1 I_2 I_3$ pixels. Thereby, x_t denotes intensity value of the pixel $t=1, \dots, T$. Within the context of the present paper we assume:

$$A1) s_{mt} s_{nt} \approx \delta(n-m) \quad \forall m, n=1, \dots, M \quad \forall t=1, \dots, T$$

A1) implies that each pixel (voxel) is dominantly occupied by one organ/tissue as well as that the encoding coefficients have binary $\{0, 1\}$ values. A1) is justified because we are interested in solving image segmentation problem. In this case, $s_{mt}=0$ implies that source m is not present at pixel t while $s_{mt}=1$ implies that source m is present at pixel t . In case of PET image, coefficients $\{a_m\}_{m=1}^M$ correspond to uptakes of organs/tissues present in the PET image. Thus, it is justified to assume that $\{a_m\}_{m=1}^M$ are distinct:

$$A2) a_m \neq a_n \quad \forall m, n=1, \dots, M \text{ and } m \neq n.$$

A. Nonlinear mapping to pseudo-multichannel PET image

We propose a pixel-wise nonlinear mapping of order D :

$$\{x_t \mapsto \phi_D(x_t) \in R_{0+}^{(D+1) \times 1}\}_{t=1}^T \text{ such that:}$$

$$\phi_D(x_t) = [1 \ x_t \ x_t^2 \ \dots \ x_t^D]^T \quad (3)$$

By using (2) and using multinomial theorem, we obtain:

$$x_t^d = \left(\sum_{m=1}^M a_m s_{mt} \right)^d \quad (4)$$

$$= \sum_{k_1+k_2+\dots+k_M=d} \frac{d!}{k_1! k_2! \dots k_M!} \prod_{1 \leq i \leq M} (a_i s_{it})^{k_i} \quad d=0, \dots, D$$

Now by using A1), equation (4) is simplified as:

$$x_t^d = \left(\sum_{m=1}^M a_m s_{mt} \right)^d \approx \sum_{m=1}^M a_m^d s_{mt}^d \quad d=0, \dots, D \quad (5)$$

Thus, using equation (3) and equation (5) we obtain $\forall t=1, \dots, T$:

$$\phi_D(x_t) = \begin{bmatrix} 1 \\ x_t \\ x_t^2 \\ \dots \\ x_t^D \end{bmatrix} = \begin{bmatrix} 1 & 1 & \dots & 1 \\ a_1 & a_2 & \dots & a_M \\ a_1^2 & a_2^2 & \dots & a_M^2 \\ \dots & \dots & \dots & \dots \\ a_1^D & a_2^D & \dots & a_M^D \end{bmatrix} \begin{bmatrix} s_{1t} \\ s_{2t} \\ \dots \\ s_{Mt} \end{bmatrix} \quad (6)$$

or on the matrix level:

$$\phi_D(\mathbf{x}) \approx \mathbf{V} \mathbf{S} \quad (7)$$

where \mathbf{V} stands for mixing or basis matrix in mapped space and \mathbf{S} stands for matrix of encoding coefficients in mapped space and it is, due to A1), equivalent to the encoding coefficients in (2). As an example, we show in Figure 3 pseudo multi-channel image in log10 scale generated by (3) for $D=7$.

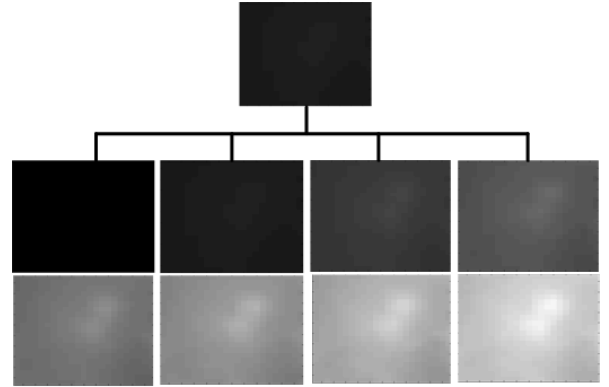


Fig. 3. Pseudo multi-channel image generated by (3) for $D=7$. Intensities are shown in log10 scale. Top row: input PET image. Mid row from left to right: pseudo-multichannel images x^0 to x^3 . Bottom row from left to right: pseudo-multichannel images x^4 to x^7 .

B. Nonnegative matrix underapproximation based decomposition of pseudo-multichannel PET image

The basis matrix \mathbf{V} is a special matrix known as Vandermonde matrix [67]. The important property of the Vandermonde matrix \mathbf{V} is that under assumption A2) and for $D=M-1$ it is nonsingular, while for $D>M-1$ the matrix \mathbf{V} is a full column rank [68]. Thus, the LMM (7) is identifiable. Regarding the order of the mapping D , it does not have to be very large since in case of PET imaging, the number of organs/tissues M

that are present in the image is small. Then, sparseness and nonnegativity constrained BSS algorithm, such as NMF algorithm [51], can be used to separate \mathbf{S} from (7) even if the LMM is possibly underdetermined.

Nonnegativity and sparseness constrained factorization is applied to solve BSS problem implied by equation (7). The nonnegative matrix underapproximation (NMU) algorithm [52], with MATLAB code available at [69], has been used for that. The NMU method performs factorization of (7) in a recursive manner extracting one component at a time. After identifying optimal rank-one solution $(\mathbf{v}_1, \mathbf{s}_1)$, the rank-one factorization is performed on the residue matrix $\phi_D(\mathbf{x}) \leftarrow \phi_D(\mathbf{x}) - \mathbf{v}_1 \mathbf{s}_1$. Herein, \mathbf{v}_1 denotes column vector and \mathbf{s}_1 denotes row vector. To preserve non-negativity of $\phi_D(\mathbf{x})$, an underapproximation constraint is imposed on \mathbf{V} and \mathbf{S} : $\mathbf{V}\mathbf{S} \leq \phi_D(\mathbf{x})$. This constraint yields localized parts-based decomposition, where different basis elements $\{\mathbf{v}_m\}_{m=1}^M$ describe disjoint parts of the input data $\phi_D(\mathbf{x})$. It has been proven in theorem 1 in [52] that, due to underapproximation constraint, number of non-zero entries of \mathbf{V} and \mathbf{S} is less than number of non-zero entries of $\phi_D(\mathbf{x})$. That, as opposed to other sparseness constrained NMF algorithms, enables sparseness constrained factorization without regularization constant and that would require a tuning procedure. When performing NMU-based factorization of matrix $\phi_D(\mathbf{x})$ in (7), the unknown number of sources M needs to be given to the NMU algorithm as an input. Our strategy is to set $M=D+1$. If, possibly, source related to lung tumor component is not extracted, M can be increased. However, our experiments executed on all clinical data show that $D=8$ and $M=D+1$ is sufficient. Thus, estimate of the sources \mathbf{S} is obtained as:

$$\hat{\mathbf{S}} = \text{NMU}(\phi_D(\mathbf{x}), D+1) \quad (8)$$

where, $D+1$ denotes number of sources (tissue components) to be extracted.

C. Selection of tumor component

After M source components are estimated by (8), it is necessary to automatically select the lung tumor component. For this reason, we formulate criterion that combines measures of smoothness and entropy. Smoothness measure reflects the fact that pixels belonging to the lung tumor component are locally more correlated than it is the case with other components. Thus, vectorized lung tumor component will be more predictable than vectorized non-tumor components. For the predictability (smoothness) measure we use [70], [71]:

$$F(\{\hat{s}_m(t_k)\}) = \log \frac{W_m}{U_m} = \log \frac{\sum_{k=1}^{k_{\max}} (\bar{s}_m(t_k) - \hat{s}_m(t_k))^2}{\sum_{k=1}^{k_{\max}} (\tilde{s}_m(t_k) - \hat{s}_m(t_k))^2} \quad (9)$$

where $\hat{s}_m(t_k)$ is the value of separated source component m at pixel t_k , W_m reflects the extent to which $\hat{s}_m(t_k)$ is predicted by a long term moving average $\bar{s}_m(t_k)$ of values in $\hat{s}_m(t_k)$, and U_m reflects the extent to which $\hat{s}_m(t_k)$ is predicted by a short term moving average $\tilde{s}_m(t_k)$ of values in $\hat{s}_m(t_k)$. The predicted values $\bar{s}_m(t_k)$ and $\tilde{s}_m(t_k)$ of $\hat{s}_m(t_k)$ are exponentially weighted sums of signal values measured up to shift $(k_{\max}-1)$, where k_{\max} stands for maximal shift, see also eq. (1.1) and (1.2) in [70]. The value of k_{\max} is not critical. That is, the lung tumor component is identified for $k_{\max} \in \{1, 2, 3, 4, 5\}$. In reported experimental results we have set $k_{\max}=5$ pixels. The predictability measures $\{F(\hat{s}_m(t_k))\}_{m=1}^M$ estimated by (9) are scaled to interval $[0, 1]$ through division of estimated values by the maximal one. It is expected that the tumor related component \hat{s}_m has the highest value of predictability. The estimated amounts of entropy, $H(\hat{s}_m)$, contained in each separated component \hat{s}_m are also scaled to interval $[0, 1]$ in a way analogous to predictability measure. Entropy is computed with the MATLAB command `entropy`. It is defined as $H(\hat{s}_m) = -\sum_{n=1}^{256} p_n(\hat{s}_m) \log_2(p_n(\hat{s}_m))$, $m=1, \dots, M$. Thereby, $\{p_n(\hat{s}_m)\}_{n=1}^{256}$ are probabilities associated with the bins of the histogram of \hat{s}_m . Thus, the tumor related component \hat{s}_m with "almost" constant values is expected to have the lowest value of entropy. Thus, we formulate the lung tumor component selection criterion as complexity measure:

$$m^* = \arg \min_m \left\{ \alpha(1 - F(s_m(t_k))) + (1 - \alpha)H(\hat{s}_m) \right\}_{m=1}^M \quad (10)$$

such that $\alpha \in [0.4, 0.5]$. The selection process is illustrated in Figure 4, whereat the minimum of criterion (10) corresponds with the component 2 that also has the largest value of Dice coefficient. As can be seen either predictability or entropy alone are not enough to select the tumor component.

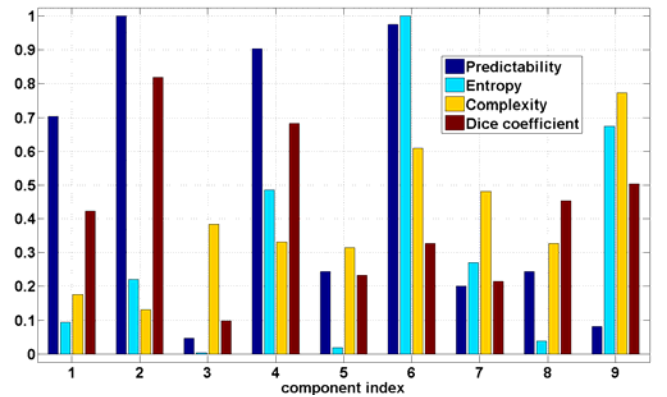


Fig. 4. The lung tumor component selection process. Component with the lowest complexity, eq. (10), has largest Dice coefficient.

D. Thresholding of the tumor component

In order to segment the lung tumor, corresponding source component extracted by the NMU algorithm has to be binarized. We obtain segmented lung tumor by thresholding each entry of $\hat{\mathbf{s}}_{m^*}^{\tau} \in R_{0+}^{I_1 \times I_2 \times I_3}$ according to:

$$\hat{\mathbf{s}}_{m^*}^{\tau} = \begin{cases} 1 & \text{if } \hat{\mathbf{s}}_{m^*}^{\tau} \geq \tau(\hat{\mathbf{s}}_{m^*}^{\max} - \hat{\mathbf{s}}_{m^*}^{\min}) \\ 0 & \text{otherwise} \end{cases} \quad \forall t = 1, \dots, T \quad (11)$$

where $\tau \in [0, 1]$ stands for threshold, $\hat{\mathbf{s}}_{m^*}^{\max}$ and $\hat{\mathbf{s}}_{m^*}^{\min}$ stand for maximal value and minimal value of $\hat{\mathbf{s}}_{m^*}^{\tau}$, respectively. Thresholding (11) reflects the fact that the NMU-based decomposition (8) does not yield perfect separation of components $\{\hat{\mathbf{s}}_m\}_{m=1}^M$. Thus, remnant parts of non-tumor tissues will, up to some extent, still be present in $\hat{\mathbf{s}}_{m^*}^{\tau}$. However, due to NMU-based separation, their contribution is expected to be low. Consequently, the threshold value τ in (11) ought to be low and that should enable delineation of lung tumor in the region of low uptake value. Indeed, cross-validation experiments executed on clinical data in Section IV yield $\tau \approx 0.15$ when $D=8$. The proposed TNNMU algorithm is summarized in the Algorithm 1 as below.

Algorithm 1. The TNNMU algorithm based single-channel PET image decomposition.

Inputs: $\underline{\mathbf{X}} \in R_{0+}^{I_1 \times I_2 \times I_3}$ 3D PET image comprised of I_3 slices of the size $I_1 \times I_2$ pixels (voxels). Order of the mapping in (3): $D=8$. Segmentation threshold in (11): $\tau=0.15$.

Step 1. Unfold 3D PET image $\underline{\mathbf{X}} \in R_{0+}^{I_1 \times I_2 \times I_3}$ into vector $\mathbf{x} \in R_{0+}^{I_1 \times I_2 \times I_3}$, where $T=I_1 I_2 I_3$.

Step 2. Perform nonlinear mapping of single-channel PET image according to (3)/(6).

Step 3. Perform the NMU decomposition according to (8).

Step 4. Select the lung tumor related source component according to (10).

Step 5. Segment selected lung tumor component $\hat{\mathbf{s}}_{m^*}^{\tau}$ according to (11).

Step 6. Fold $\hat{\mathbf{s}}_{m^*}^{\tau}$ into $\hat{\underline{\mathbf{S}}}_{m^*}^{\tau} \in R_{0+}^{I_1 \times I_2 \times I_3}$.

Output: $\hat{\underline{\mathbf{S}}}_{m^*}^{\tau}$, segmented 3D lung tumor component.

IV. EXPERIMENTAL RESULTS

A. Data

For validation we used 18 PET-CT studies from patients with NSCLC. Patients were scanned on GE Discovery STE 16 PET-CT scanner. PET images were reconstructed into 120×120 matrices with the voxel size of $5.47 \times 5.47 \times 3.27$ mm³. We evaluated the performance of the TNNMU algorithm in comparison with manual delineation by two radiologists,

having more than ten years of experience, abbreviated as BZ and XW. The manual delineations were used as "ground truth" (GT) and referred to as GT-1 and GT-2 from now on. The size of the tumor varied between 8.05 cm³ (82.28 voxels) to 506.52 cm³ (5177 voxels) according to GT-1, and between 6.75 cm³ (68.99 voxels) to 448.11 cm³ (4580 voxels) according to GT-2. Figure 5 shows estimated tumor size per patient according to two ground truths. Inter-observer variability calculated as a relative difference between aggregate volume of 18 NSCLCs according to GT-1 and GT-2 is 1.33%. Figure 6a shows result of linear regression analysis for tumor size in cm³ estimated by GT-1 and GT-2: $GT-2 = 0.9618 \times GT-1 + 4.624$. Pearson correlation coefficient between the two estimates is 0.9969. Figure 6b shows Bland-Altman plot for GT-1 vs. GT-2, whereat difference in tumor size between GT-1 and GT-2 is normalized with respect to the average: $(GT-1 + GT-2)/2$.

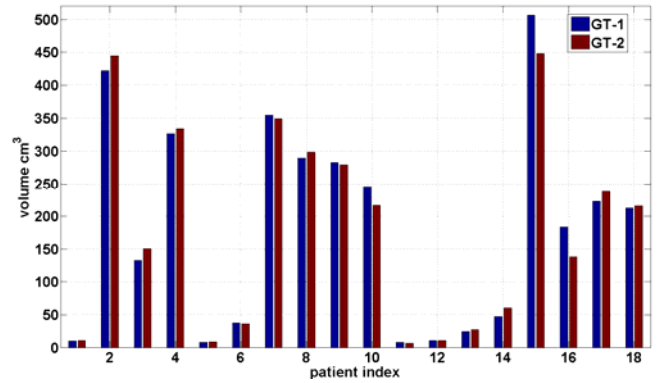


Fig. 5. Estimated tumor size in cm³ according to GT-1 and GT-2.

B. Other Delineation Approaches for Comparisons

We compared the TNNMU algorithm with five delineation methods which were: 1) a threshold at 40% of maximum SUV, 2) a threshold at 50% of maximum SUV, 3) AP [16], [17], 4) GC [15], and 5) RW [14]. The thresholding methods are referred as TH40 and TH50 while the proposed method is referred as TNNMU. The maximum SUV was estimated within the entire volume. The TH40, TH50, AP and TNNMU algorithms were implemented in MATLAB[®] 2011b (The MathWorks, Inc., Natick, MA) script language. The MATLAB code for AP method is available for free download at [72].

C. Performance Measure

We have used Dice similarity coefficient (DSC) to measure the degree of overlap between each of the five delineation results and ground truths. DSC is calculated as:

$$DSC(V_1, V_2) = \frac{2|V_1 \cap V_2|}{|V_1| + |V_2|}$$

where V_1 stands for ground truth volume, and V_2 stands for the volume obtained from each delineation approach. Thereby, $DSC(V_1, V_2) \in [0, 1]$. A DSC value of 0 indicates no overlap and a value of 1 indicates perfect overlap.

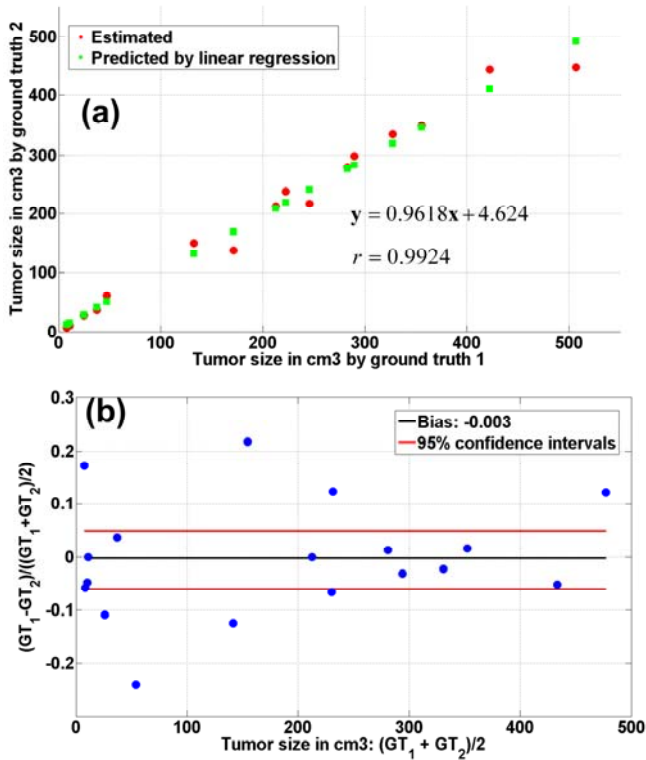


Fig. 6. a) linear regression analysis between GT-1 and GT-2 evaluated between slices of 3D PET image for different patients. b) Bland-Altman plots for interobserver and intraobserver assessment of manual segmentation results. Vertical axis show difference in tumor size estimation normalized with respect to average value between GT-1 and GT-2.

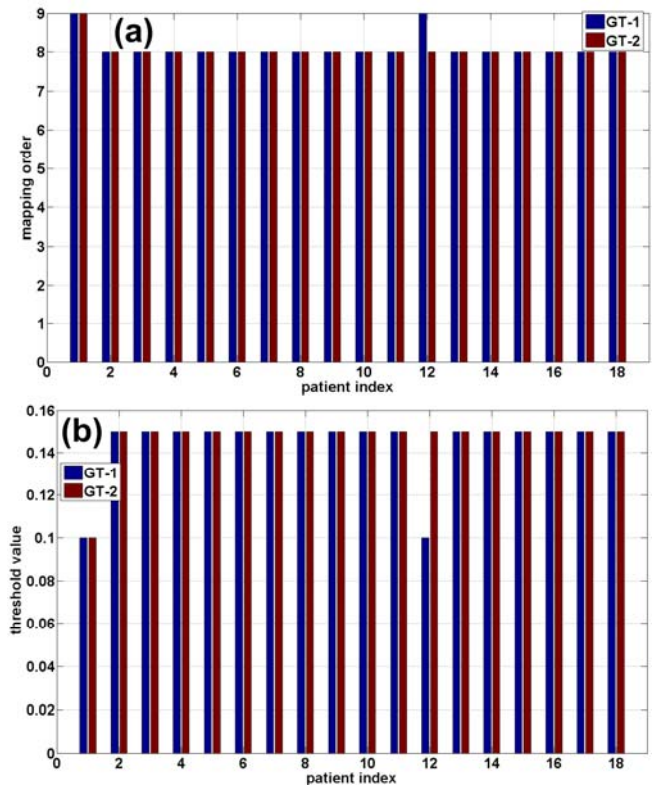


Fig. 7. Optimal values of a) mapping order D and b) threshold τ obtained by leave-one-out cross validation for GT-1 and GT-2.

D. Parameters of the TNNMU Algorithm

The TNNMU algorithm includes two main parameters: order of nonlinear mapping D in (3) and threshold τ used in (11) to segment the lung tumor component separated by the NMU algorithm in (8). Thus, we have calculated DSC between ground truths and delineation results obtained by the TNNMU(D, τ) from 18 NSCLCs PET studies, whereas $D \in \{3, \dots, 9\}$ and $\tau \in \{0.1, 0.15, 0.2, 0.25, 0.3\}$. Thereby, we have used leave-one-out cross validation to estimate optimal values for D and τ , as well as to estimate performance of the TNNMU algorithm. That is, one image was left as test image and optimal values for D and τ were selected based on the rest and applied to segmentation of the test image. The values of D and τ that correspond to the highest value of Dice coefficient are shown in Figure 7. The mean value of D is 8.11 for GT-1 and 8.06 for GT-2. The mean value of τ is 0.144 for GT-1 and 0.147 for GT-2. That justifies selection of $D=8$ and $\tau=0.15$ as approximately optimal. Figure 8 shows segmentation results for some characteristic combinations of D and τ . Visually, it is evident that proposed combination $D=8$ and $\tau=0.15$ corresponds best with the GT-1.

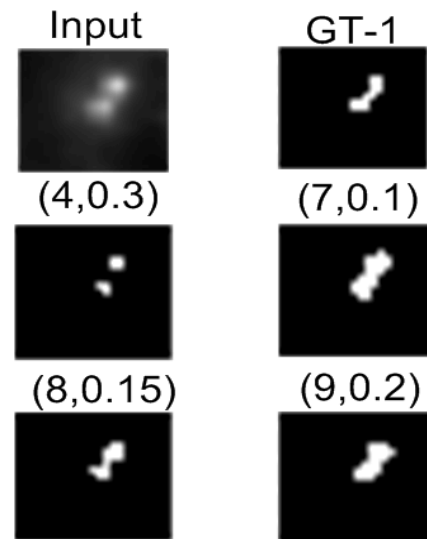


Fig.8. Segmentation results of the TNNMU algorithm parameterized by (D, τ) for one slice of PET study. Shown area between pixels 53:73 and 42:64.

E. Results of Comparative Performance Analysis

Delineation results obtained by the TNNMU, TH50, GC, RW and AP algorithms are quantified in terms of DSC calculated for 18 PET image studies with respect to GT-1 and GT-2, and shown respectively in Fig. 9a) and 9b). Thereby, results for the TNNMU algorithm were obtained by leave-one-out cross validation. Aggregate results for all 18 PET image studies in term of mean value of DSC (\pm standard deviation) are shown in Table I. Table II shows p values estimated pairwise by repeated measures ANOVA tests on DSC obtained by the TNNMU method and TH50, TH40, AP, GC and RW methods. We have used `anova_rm` function available at MATLAB File Exchange Central, [78], to run the test. The automatic TNNMU method achieves the same performance as GC. It is better than the rest of methods, although not statistically significantly. However, the TNNMU method is fully automatic, while GC and RW are interactive. In regard to the AP, that is supposed to be automatic, combination of several segmented layers has to be found to achieve best result. That requires postprocessing. In case of results presented herein, 3 layers had to be combined to achieve reported results. Layer selection is analogous to the component selection performed by the TNNMU method. However, that is executed automatically by using criterion (10). We also want to emphasize that RW-GC integrated co-segmentation of PET-CT image method in [13] yielded result in term of DSC value equal to 0.84 ± 0.06 , but with the help of CT information. Thus, given the fact that TNNMU method is fully automatic and is using information from the PET image only, result obtained by the TNNMU can be considered good. Hence, results presented in Tables I and II suggest that the proposed TNNMU algorithm can be method of choice for lung tumor delineation from sole PET image. We showed in Figure 10 segmentation results for one PET study obtained by TH50, GC, RW, AP and TNNMU algorithms. Ground truths 1 and 2 as well as input PET images are also shown. Obtained mean value of DSC (\pm one standard deviation) for GT-1 for TH50, RW, AP, GC and TNNMU methods is given as: 0.71 ± 0.08 , 0.79 ± 0.11 , 0.84 ± 0.08 , 0.80 ± 0.12 and 0.90 ± 0.05 . For GT-2, mean DSC values (\pm one standard deviation) are given in the same order as: 0.71 ± 0.08 , 0.79 ± 0.09 , 0.85 ± 0.09 , 0.80 ± 0.10 , 0.93 ± 0.08 . To validate precision (reproducibility) of the TNNMU algorithm, it has been applied repeatedly 100 times on the 3D PET images of 18 patients. The aggregate result, in terms of Dice coefficient, with respect to GT-1 for all 18 patients and all 100 segmentations is 0.78 ± 0.12 which coincides with the value presented in Table I. Furthermore, Figure 11 shows segmentation results for the PET study, whereas demarcation lines, corresponding with GC, TNNMU and GT-1, are superimposed on input PET images. Reported segmentation experiments were executed in MATLAB script language running under 64-bit Windows operating system on desktop computer with clock speed of 2.4GHz and 24GB of RAM. It takes 63 s for the TNNMU algorithm to segment PET image comprised of 50 slices. Direct comparison with GC and RW is not possible due to their interactive nature. AP algorithm is very fast and takes 0.68 s to segment the same PET image once proper combination of segmented layers is found. However, it takes multiple runs to

find such a combination. This also raises question of overfitting.

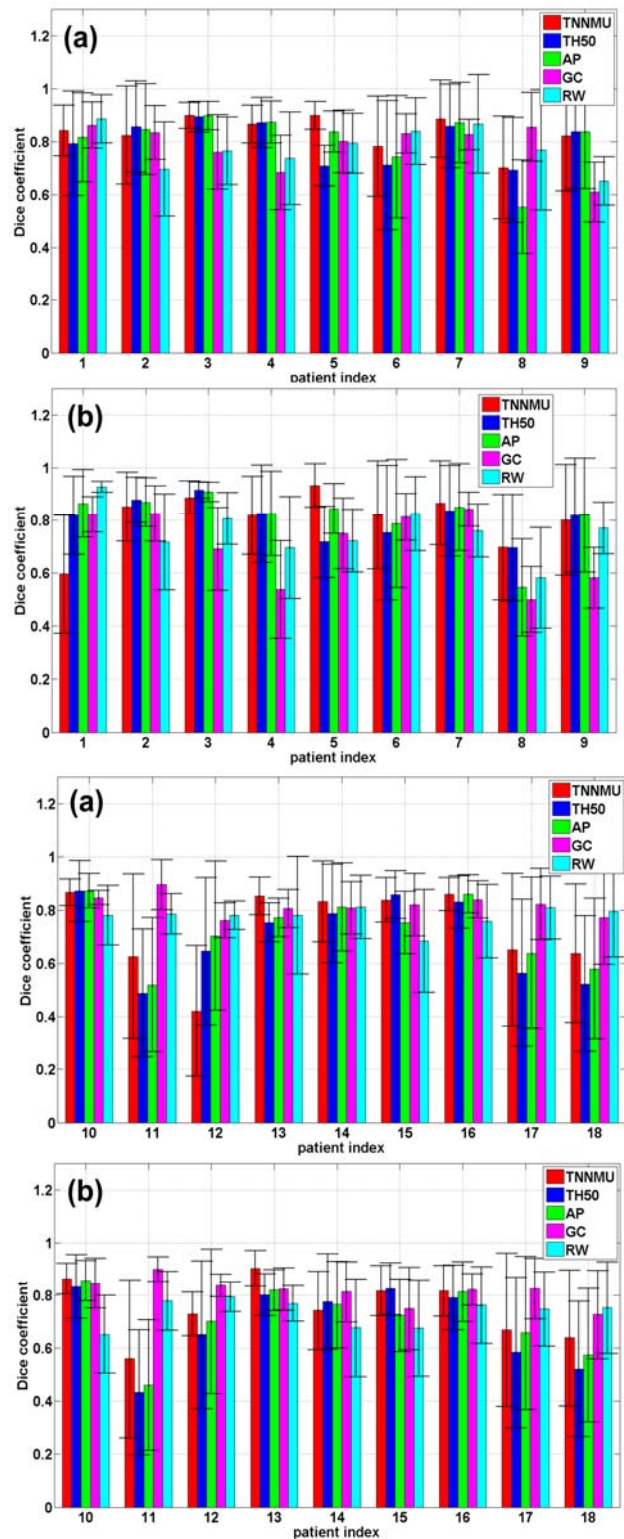


Fig. 9. Mean value (\pm one standard deviation) of DSC of delineation results obtained by the TNNMU (squares), TH50 (stars), AP (circles), GC (pentagram) and RW (triangle down) algorithms on 3D segmentation of 18 PET studies of patients diagnosed with NSCLC. DSC calculation with respect to: (a) GT_1, and (b) GT_2.

TABLE I

MEAN VALUES OF DSC (\pm ONE STANDARD DEVIATION) OBTAINED BY THE TNNMU, TH50, TH40, AP, GC AND RW ALGORITHMS OVER 18 PET IMAGE STUDIES AND AVERAGED OVER TWO GROUND TRUTHS. MAPPING ORDER $D=8$. SEGMENTATION THRESHOLD $\tau=0.15$. THE BEST RESULT IS IN BOLD FONT.

	Averaged GT
TNNMU	0.78\pm0.12
TH50	0.75 \pm 0.13
TH40	0.60 \pm 0.17
AP	0.77 \pm 0.13
GC	0.78\pm0.1
RW	0.77 \pm 0.07

TABLE II

P VALUES ESTIMATED BY REPEATED MEASURES ANOVA TEST BETWEEN THE TNNMU AND TH50, TH40, AP, GC AND RW ALGORITHMS OVER 18 PET IMAGE STUDIES AND TWO GROUND TRUTHS. MAPPING ORDER $D=8$. SEGMENTATION THRESHOLD $\tau=0.15$.

	GT-1	GT-2
TH50	0.1509	0.1860
TH40	1.5×10^{-6}	0
AP	0.4015	0.3921
GC	0.6062	0.6685
RW	0.8529	0.3519

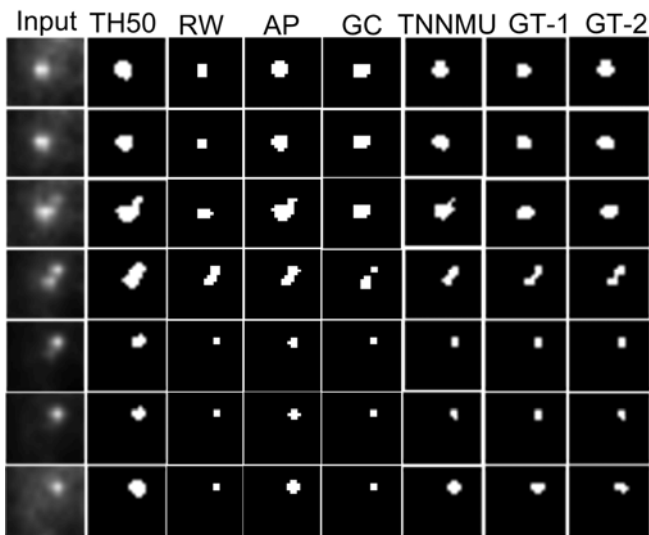


Fig. 10. Comparative results for one PET study. Shown area between pixels 53:73 and 42:64. From left to right: input PET image, segmentation results obtained by TH50, RW, AP, GC and TNNMU methods, ground truths 1 and 2. From top to bottom: slices 1 to 7. Mean value of DSC (\pm one standard deviation) for GT_1: TH50: 0.71 \pm 0.08, RW: 0.79 \pm 0.11, AP: 0.84 \pm 0.08, GC: 0.80 \pm 0.12, TNNMU: 0.90 \pm 0.05 and for GT_2: TH50: 0.71 \pm 0.08, RW: 0.79 \pm 0.09, AP: 0.85 \pm 0.09, GC: 0.80 \pm 0.10, TNNMU: 0.93 \pm 0.08.

V. DISCUSSION

The proposed single-channel BSS method for segmentation of the lung tumor component from PET image combines nonlinear mapping of PET image to pseudo-multichannel image with NMU-based factorization of mapped image. Underapproximation constraint of the NMU algorithm incorporates implicitly sparseness constraints on the encoding coefficients matrix \mathbf{S} in (7). That is achieved without sparseness regularization tradeoff parameter that would required tuning.

That, in combination with predefined values of mapping order and binarization threshold, makes proposed method fully automatic. That is a big advantage of the proposed method with respect to interactive methods GC and RW as well as with respect to the subspace clustering methods such as Ncut [36], that is equivalent to orthogonality regularized NMF and therefore requires tuning of the regularization constant. However, implicit underapproximation based sparseness constraint has a disadvantage of not yielding the sparsest decomposition possible. Having no direct control over degree of sparseness of \mathbf{S} can decrease quality of delineation when two components have very similar uptake values. That happens if the lung tumor is not homogenous but contains also a necrotic part. Quality of delineation in such a case may deteriorate since uniqueness of the solution of (7) depends on the amount of sparseness of $\{\mathbf{s}_t \in \mathbb{R}_{0+}^{M \times 1}\}_{t=1}^T$ and mutual coherence, $\mu(\mathbf{V})$, of \mathbf{V} in (6)/(7) through [73]:

$$\|\mathbf{s}_t\|_0 < \frac{1}{2} \left(1 + \frac{1}{\mu(\mathbf{V})} \right) \quad (12)$$

where $\|\mathbf{s}_t\|_0$ stands for the ℓ_0 quasi-norm that counts number of non-zero coefficients in \mathbf{s}_t . Thus, it is beneficial to have more direct control over the degree of sparseness of \mathbf{s}_t . When two components have very similar uptake values the corresponding basis vectors in the LMM (6) will, due to A2), be highly correlated. Thus, $\mu(\mathbf{V})$ will be close to 1. Hence, the required amount of sparseness imposed on \mathbf{s}_t by (12) is $\|\mathbf{s}_t\|_0 \leq 1$. Thanks to A1) that condition is fulfilled. It is envisioned that using the NMF algorithm with sparseness constraint based on the ℓ_1 -norm, [74], [75] or the ℓ_0 -norm, [76], of \mathbf{S} to solve factorization problem (7) would provide more accurate demarcation of the necrotic part from the rest of the tumor than using the NMU algorithm. In particular, for the ℓ_0 -norm constrained NMF algorithm [76] explicit sparseness constraint can be imposed on $\|\mathbf{s}_t\|_0$ to be 1. As demonstrated in [77], that enabled separation of tissue components present in the image of unstained histopathological specimen.

VI. CONCLUSIONS

In this paper, we have proposed a novel method for single-channel nonnegative sparse BSS as well as its application to automatic 3D delineation of the lung tumor from PET image. Proposed method was compared with thresholds of 40% and 50% of maximum SUV, AP, GC and RW on 18 NSCLC datasets with respect to manual delineation performed by two clinical experts. Since the proposed method achieved performance comparable with interactive methods, considering the unique challenges of lung tumor segmentation from PET images, our findings support possibility of using our fully automated method in routine clinics. The source codes will be available at www.mipav.net/English/research/research.html.

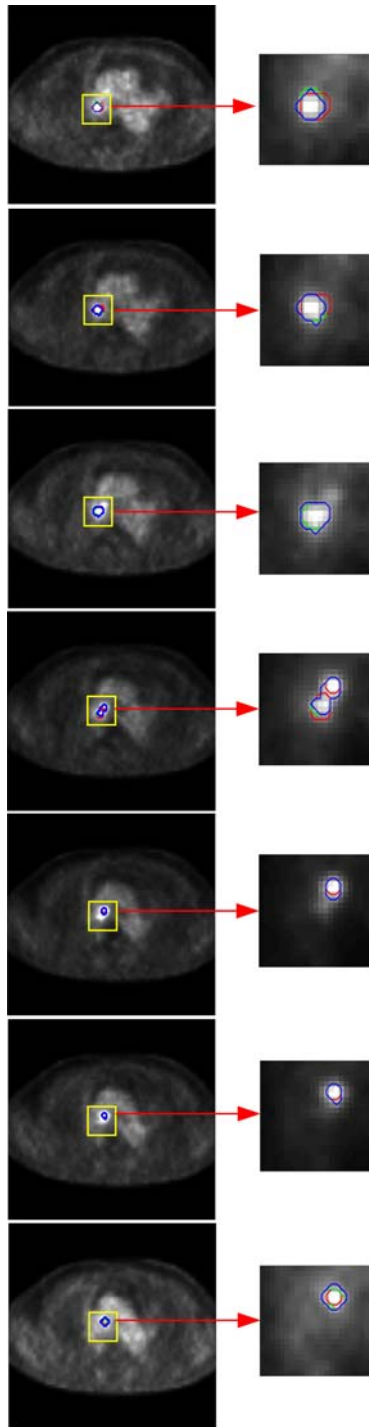


Fig. 11. Comparative results for one PET study on 7 slices. The left column shows the segmentation results on the whole slice, and the right column shows the magnified view of the tumor region. Tumor demarcation lines are superimposed on input PET image. Red: GC; blue: TNNMU; green: GT-1. Intensity on displayed PET image is adjusted.

ACKNOWLEDGMENTS

We want to thank Professors Milan Sonka for proofreading the paper and giving us useful suggestions.

REFERENCES

- [1] A. Jemal, F. Bray, M. M. Center, J. Ferlay, E. Ward, and D. Forman, "Global cancer statistics," *CA: A Cancer J. Clin.*, vol. 61, pp. 69-90, 2011.
- [2] S. B. Edge, D. R. Byrd, C. Compton, A. Fritz, F. Greene, and A. Trotti, "Lung," in *AJCC Cancer Staging Manual*, S. Edge, Ed. et al., 7th ed. New York, NY, USA: Springer, 2010, pp. 253-270.
- [3] X. Wang, C. Ballangan, H. Cui, M. Fulham, S. Eberl, Y. Yin, and D. Feng, "Lung Tumor Delineation Based on Novel Tumor-Background Likelihood Models in PET-CT Images," *IEEE Trans. Nuclear Sci.*, vol. 61, no. 1, pp. 218-224, Feb. 2014.
- [4] G. S. M. Eschmann, G. Friedel, F. Paulsen, M. Reimold, T. Hehr, J. Scheiderbauer, W. Budach, J. Kotzerke, and R. Bares, "Impact of staging with 18 F-FDG-PET on outcome of patients with stage III non-small cell lung cancer: PET identifies potential survivors," *Eur. J. Nucl. Med. Mol. Imaging*, vol. 34, pp. 54-59, Jan. 2007.
- [5] A. Baardwijk, G. Bosmans, L. Boersma, J. Buijsen, S. Wanders, M. Hochstenbag, R. Suylen, A. Dekker, C. Dehing-Oberije, R. Houben, S. Bentzen, M. Kroonenburgh, P. Lambin, and D. Ruyscher, "PET-CT based auto-contouring in non-small-cell lung cancer correlates with pathology and reduces interobserver variability in the delineation of the primary tumor and involved nodal volumes," *Int. J. Radiat. Oncol. Biol. Phys.*, vol. 68, no. 3, pp. 771-778, 2007.
- [6] C. Ballangan, X. Wang, M. Fulham, S. Eberl, Y. Yin, and D. Feng, "Automated Delineation of Lung Tumors in PET Images Based on Monotonicity and a Tumor-Customized Criterion," *IEEE Trans. Inf. Tech. Biomed.*, vol. 15, no. 5, pp. 691-702, Sept. 2011.
- [7] E. Miele, G. P. Spinelli, F. Tomao, A. Zullo, F. De Marinis, G. Pasciuti, L. Rossi, F. Zoratto, and S. Tomao, "Positron emission tomography (PET) radiotracers in oncology - utility of 18F-Fluoro-deoxy-glucose (FDG)-PET in the management of patients with non-small-lung cancer (NSCLC)," *J. Exp. and Clinical Res.*, vol. 27, 52, 10 pages, 2008.
- [8] Q. Song, J. Bai, D. Han, S. Bhatia, W. Sun, W. Rockey, J. E. Bayouth, J. M. Buatti, and X. Wu, "Optimal Co-Segmentation of Tumor in PET-CT Images With Context Information," *IEEE Trans. Med. Imag.*, vol. 32, no. 9, pp. 1685-1697, Sept. 2013.
- [9] B. Foster, U. Bagci, A. Mansoor, Z. Xu, and D. J. Mollura, "A review on segmentation of positron emission tomography images," *Comp. in Biology and Med.*, vol. 50, pp. 76-96, 2014.
- [10] U. Bagci, J. Udupa, N. Mendhiratta, B. Foster, Z. Xu, J. Yao, X. Chen and D.J. Mollura, "Joint segmentation of functional and anatomical images: applications in quantification of lesions from PET, PET-CT, MRI-PET, and MRI-PET-CT images," *Med. Image Anal.*, vol. 17, no. 8, pp. 929-945, 2013.
- [11] E. P. Visser, O. C. Boerman, and W. J. G. Oyen, "SUV: From silly useless value to smart uptake value," *J. Nucl. Med.*, vol. 51, pp. 173-175, Feb. 2010.
- [12] P. Tylski, S. Stute, N. Grotus, K. Doyeux, S. Hapdey, I. Gardin, B. Vanderlinden, and I. Buvat, "Comparative assessment of methods for estimating tumor volume and standardized uptake value in 18 F-FDG PET," *J. Nucl. Med.*, vol. 51, pp. 268-276, Feb. 2010.
- [13] W. Ju, D. Xiang, B. Zhang, I. Kopriva, and X. Chen, "Random Walk and Graph Cuts for Co-Segmentation of Lung Tumor on PET-CT Images," *IEEE Trans. Image Proc.*, vol. 24, no. 12, pp. 5854-5867, Dec. 2015.
- [14] L. Grady, "Random walks for image segmentation," *IEEE Trans. Pattern Anal. Mach. Intel.*, vol. 28, no. 11, pp. 1768-1783, 2006.
- [15] Y. Boykov, O. Veksler, and R. Zabih, "Fast approximate energy minimization via graph cuts," *IEEE Trans. Pattern Anal. Mach. Intel.*, vol. 23, no. 11, pp. 1222-1239, 2001.
- [16] B. Foster, U. Bagci, B. Luna, B. Dey, W. Bishai, S. Jain, Z. Xu, and D.J. Mollura, "Robust segmentation and accurate target definition for positron emission tomography images using affinity propagation," in *2013 IEEE International Symposium on Biomedical Imaging: From Nano to Macro (ISBI 2013)*, pp. 1461-1464, San Francisco, CA, USA, April 7-11, 2013.
- [17] B. Foster, U. Bagci, Z. Xu, B. Dey, B. Luna, W. Bishai, S. Jain, and D. Mollura, "Segmentation of PET Images for Computer-Aided Functional Quantification of Tuberculosis in Small Animal Model," *IEEE Trans. Biomed. Eng.*, vol. 61, no. 3, pp. 711-724, 2014.
- [18] C. Caldwell, K. Mah, Y. Ung, C. Danjoux, J. Balogh, S. Ganguli, L. and Ehrlich, "Observer variation in contouring gross tumor volume in patients with poorly defined non-small-cell lung tumors on CT: the impact of 18 FDG-hybrid PET fusion," *Int. J. Radiat. Oncol. Biol. Phys.*, vol. 51, no. 4, pp. 923-931, 2001.

- [19] Y. E. Erdi, K. Rosenzweig, A. K. Erdi, H. A. Macapinlac, Y.-C. Hu, L. E. Braban, J. L. Humm, O. D. Squire, C.-S. Chui, S. M. Larson, and E. D. Yorke, "Radiotherapy treatment planning for patients with non-small cell lung cancer using positron emission tomography (PET)," *Radiother. Oncol.*, vol. 62, pp. 51-60, Jan. 2002.
- [20] K. Mah, C. Caldwell, Y. Ung, C. Danjoux, J. Balogh, N. Ganguli, L. Ehrlich, and R. Tirone, "The impact of 18FDG-PET on target and critical organs in CT-based treatment planning of patients with poorly defined non-small lung carcinoma: a prospective study," *Int. J. Radiat. Oncol. Biol. Phys.*, vol. 52, pp. 339-350, Feb. 2002.
- [21] J. Bradley, W. L. Thorstad, S. Mutic, T. R. Miller, F. Dehdashti, B. A. Siegel, W. Bosch, and R. J. Bertrand, "Impact of FDG-PET on radiation therapy volume delineation in non-small lung cancer," *Int. J. Radiat. Oncol. Biol. Phys.*, vol. 59, pp. 78-86, May 2004.
- [22] U. Nestle, K. Walter, S. Schmidt, N. Licht, C. Nieder, B. Motaref, D. Hellwig, M. Niewald, D. Ukena, C.-M. Kirsch, G. Sybrecht, and K. Schnabel, "18 F-deoxyglucose positron emission tomography (FDG-PET) for the planning of radiotherapy in lung cancer: high impact in patients with atelectasis," *Int. J. Radiat. Oncol. Biol. Phys.*, vol. 44, pp. 593-597, May 1999.
- [23] K. J. Biehl, F.-M. Kong, F. Dehdashti, J.-Y. Jin, S. Mutic, I. El Naqa, B. A. Siegel, and J. D. Bradley, "18 F-FDG PET definition of gross tumor volume for radiotherapy of non-small cell lung cancer: Is a single standardized uptake value threshold approach appropriate?" *J. Nucl. Med.*, vol. 47, pp. 1808-1812, Nov. 2006.
- [24] U. Nestle, S. Kremp, A. Schaefer-Schuler, C. Sebastian-Welsch, D. Hellwig, C. Rube, and C.-M. Kirsch, "Comparison of different methods for delineation of F-FDG PET-positive tissue for target volume definition in radiotherapy of patients with non-small cell lung cancer" *J. Nucl. Med.*, vol. 46, pp. 1342-1348, Aug. 2005.
- [25] B. Yaremko, T. Riauka, D. Robinson, B. Murray, A. Alexander, A. McEwan, and W. Roa, "Thresholding in PET images of static and moving targets," *Phys. Med. Biol.*, vol. 50, no. 24, 5969-5982, 2005.
- [26] J. Daisne, M. Sibomana, A. Bol, T. Doumont, M. Lonneux, and V. Grégoire, "Tridimensional automatic segmentation of PET volumes based on measured source-to-background ratios: influence of reconstruction algorithms," *Radiother. Oncol.*, vol. 69, no. 3, pp. 247-250, 2003.
- [27] W. Jentzen, L. Freudenberg, E. Eising, M. Heinze, W. Brandau, and A. Bockisch, "Segmentation of PET volumes by iterative thresholding," *J. Nucl. Med.*, vol. 48, no. 1, pp. 108-114, 2007.
- [28] M. Aristophanous, B.C. Penney, M.K. Martel, and C.A. Pelizzari, "A gaussian mixture model for definition of lung tumor volumes in positron emission tomography," *Med. Phys.*, vol. 34, pp.4223-4235, 2007.
- [29] M. Hatt, C. Cheze le Rest, A. Turzo, C. Roux, and D. Visvikis, "A fuzzy locally adaptive Bayesian segmentation approach for volume determination in PET," *IEEE Trans. Med. Imaging*, vol.28, no.6, pp.881-893, 2009.
- [30] A. Kerhet, C. Small, H. Quon, T. Riauka, R. Greiner, A. McEwan, and W. Roa, "Segmentation of lung tumors in positron emission tomography scans: a machine learning approach," *Artif. Intell. Med.*, pp. 146-155, 2009.
- [31] F. Yang, and P. Grigsby, "Delineation of FDG-PET tumors from heterogeneous background using spectral clustering," *Eur. J. Radiol.*, vol. 81, no. 11, pp. 3535-3541, 2012.
- [32] J. Sykes, "Reflection on the current status of commercial automated segmentation systems in clinical practice," *J. Med. Rad. Sci.*, vol. 61, pp. 131-134, 2014.
- [33] I. T. Jolliffe, *Principal Component Analysis*. Springer, 2002.
- [34] A. Hyvarinen, J. Karhunen, and E. Oja, *Independent Component Analysis*. Wiley, 2001.
- [35] P. O. Hoyer, "Non-negative Matrix Factorization Algorithm with Sparseness Constraints," *J. Machine Learn. Res.*, vol. 5, pp. 1457-1469, 2004.
- [36] J. Shi, and J. Malik, "Normalized cuts and image segmentation," *IEEE Trans. Patt. Anal. Mach. Intell.*, vol. 22, pp. 888-905, 2000.
- [37] H. Lu, Z. Fu, and X. Shu, "Non-negative and sparse spectral clustering," *Pattern Recognition*, vol. 47, pp. 418-426, 2014.
- [38] P. Comon and Ch. Jutten, Eds., *Handbook of Blind Source Separation*, Academic Press, 2010.
- [39] C. -I. Chang, and Q. Du, "Estimation of number of spectrally distinct signal sources in hyperspectral imagery," *IEEE Trans. on Geosc. and Remote Sens.*, vol. 42, pp. 608-619, 2004.
- [40] V. F. Haertel, and Y. E., Shimabukuro, "Spectral Linear Mixing Model in Low Spatial Resolution Image Data," *IEEE Geosc. and Remote Sens.*, vol. 43, pp. 2555-2562, 2005.
- [41] I. Kopriva, A. Peršin, N. Puizina-Ivić, and L. Mirić, "Robust demarcation of basal cell carcinoma by dependent component analysis-based segmentation of multi-spectral fluorescence image," *J. of Photochemistry and Photobiology B: Biology*, vol. 100, pp. 10-18, 2010.
- [42] G. Begelman, M. Zibulevsky, E. Rivlin, and T. Kolatt, "Blind Decomposition of Transmission Light Microscopic Hyperspectral Cube Using Sparse Representation," *IEEE Trans. on Medical Imaging*, vol. 28, No. 8, pp. 1317-1324, 2009.
- [43] T. Nakai, S. Muraki, E. Bagarinao, Y. Miki, Y. Takehara, K. Matsuo, C. Kato, H. Sakahara, and H. Isoda, "Application of independent component analysis to magnetic resonance imaging for enhancing the contrast of gray and white matter," *Neuroimage*, vol. 21, 251-260, 2004.
- [44] X. Hu, A. Shimizu, H. Kobatake, and S. Nawano, "Independent Component Analysis of Four-Phase Abdominal CT Images," *LNCS*, vol. 3217, pp. 916-924, 2004.
- [45] X. Hu, A. Shimizu, H. Kobatake, and S. Nawano, "Applying ICA Mixture Analysis for Segmenting Liver from Multi-phase Abdominal CT Images," *LNCS*, vol. 3150, pp. 54-61, 2004.
- [46] P. Comon, "Independent component analysis - A new concept?," *Sig. Proc.*, vol. 36, pp. 287-314, 1994.
- [47] Y. Li, A. Cichocki, and S. I. Amari, "Analysis of sparse representation and blind source separation," *Neural Computation*, vol. 16, pp. 1193-1234, 2004.
- [48] I. Kopriva, and A. Cichocki, "Blind decomposition of low-dimensional multi-spectral image by sparse component analysis," *J. Chemometrics*, vol. 23, no. 11, pp. 590-597, 2009.
- [49] D.D. Lee, and H.S. Seung, "Learning the parts of objects by nonnegative matrix factorization," *Nature*, vol. 401, pp. 788-791, 1999.
- [50] A. Cichocki, R. Zdunek, A. H. Phan, and S. I. Amari, *Nonnegative Matrix and Tensor Factorizations - Applications to Exploratory Multi-way Data Analysis and Blind Source Separation*. Wiley, 2009.
- [51] M. Berry, M. Browne, A. Langville, P. Pauca, and R. Plemmons, "Algorithms and applications for approximate nonnegative matrix factorization," *Comp. Statist. Data Anal.*, vol. 52, no. 1, pp. 155-173, Jun. 2007.
- [52] N. Gillis, and F. Glineur, "Using underapproximations for sparse nonnegative matrix factorization," *Pattern Rec.*, vol. 43, no. 4, pp. 1676-1687, April 2010.
- [53] I. Kopriva, I. Jerić, and L. Brkljačić, "Nonlinear Mixture-wise Expansion Approach to Underdetermined Blind Separation of Nonnegative Dependent Sources," *J. Chemometrics*, vol. 27, pp.189-197, 2013.
- [54] M. E. Davies, and C. J. James, "Source separation using single channel ICA," *Sig. Proc.*, vol. 87, pp.1819-1832, 2007.
- [55] Y.C. Ouyang, H.M. Chen, J.W. Chai, C.C.C. Chen, S.K. Poon, C.W. Yang, S.K. Lee, and C.I. Chang, "Band Expansion-Based Over-Complete Independent Component Analysis for Multispectral Processing of Magnetic Resonance Image," *IEEE Trans. Biomed. Eng.*, vol. 55, no. 6, pp. 1666-1677, June 2008.
- [56] B. Mijović, M. De Vos, I. Gligorijević, J. Taelman, and S. Van Huffel, "Source Separation from Single-Channel Recordings by Combining Empirical Mode Decomposition and Independent Component Analysis," *IEEE Trans. on Biomed. Eng.*, vol. 57, no. 9, pp. 2188-2196, Sept. 2010.
- [57] J. Lin, and A. Zhang, "Fault feature separation using wavelet-ICA filter," *NDT&E International*, vol. 38, pp. 421-427, 2005.
- [58] Q. He, S. Su, and R. Du, "Separating mixed multi-component signal with an application in mechanical watch movement," *Dig. Sig. Proc.*, vol. 18, pp. 1013-1028, 2008.
- [59] D. Gunawan, and D. Sen, "Iterative Phase Estimation for the Synthesis of Separated Sources From Single-Channel Mixtures," *IEEE Sig. Proc. Let.*, vol. 17, no. 5, pp. 421-424, May 2010.
- [60] R. M. Parry, and I. Essa, "Phase-Aware Non-negative Spectrogram Factorization," *Lect. Notes Comp. Sci.*, vol. 4666, pp. 536-543, 2007.
- [61] B. Gao, W. L. Woo, and B. W.-K. Ling, "Machine Learning Source Separation Using Maximum A Posteriori Nonnegative Matrix Factorization," *IEEE Trans. on Cybernetics*, vol. 44, no. 7, pp. 1169-1179, July 2014.
- [62] G.-J. Jang, and T.-W. Lee, "A Maximum Likelihood Approach to Single-channel Source Separation," *J. Machine Learn. Res.*, vol. 4, pp. 1365-1392, 2003.
- [63] S. T. Roweis, "One microphone source separation," in *Adv. Neural Inf. Proc. Syst.*, 2000, pp. 793-799.

- [64] H.-G. Ma, Q.-B. Jiang, Z.-Q. Liu, G. Liu, and Z.-Y. Ma, "A novel blind source separation method for single-channel signal," *Sig. Proc.*, vol. 90, no. 12, pp. 3232-3241, 2010.
- [65] N. E. Huang, M. L. Wu, S. R. Long, S. S. Shen, W. D. Qu, P. Gloersen, and K. L. Fan, "The empirical mode decomposition and the hilbert spectrum for nonlinear and non-stationary time series analysis," *Proc. Royal Soc. London*, vol. 454A, no. 1971, pp. 903-993, 1998.
- [66] T. Alexandrov, and N. Golyandina, "Automatic extraction and forecast of time-series cyclic components within the framework of SSA," in: *Proceedings of the Fifth Workshop on Simulation*, St. Petersburg, Russia, June 26-July 2, 2005, pp. 45-50.
- [67] G. Golub, and C. F. Van Loan, "Vandermonde Systems and the FFT," in *Matrix Computations* 3rd ed., Baltimore and London, The Johns Hopkins University Press, 1996, ch. 4, pp. 183-192.
- [68] C. J. Demeure, "Fast QR Factorization of Vandermonde Matrices," *Linear Alg. and Its Appl.*, vol. 122-124, pp. 165-194, 1989.
- [69] The Nicolas Gillis Website. <https://sites.google.com/site/nicolasgillis/code> [7 September 2016].
- [70] J. V. Stone, "Blind source separation using temporal predictability," *Neural Comput.*, vol. 13, pp. 1559-1574, 2001.
- [71] I. Kopriva, and A. Peršin, "Unsupervised decomposition of low-intensity low-dimensional multi-spectral fluorescent images for tumour demarcation," *Med. Image Anal.*, vol. 13, pp. 507-518, 2009.
- [72] The MATLAB File Exchange Central Website. <http://www.mathworks.com/matlabcentral/fileexchange/44447-segmentation-of-pet-images-based-on-affinity-propagation-clustering> [7 September 2016].
- [73] R. Gribonval, and M. Nielsen, "Sparse Representations in Unions of Bases," *IEEE Trans. Information Theory*, vol. 49, no. 12, pp. 3320-3325 2003.
- [74] P. O. Hoyer, "Non-negative matrix factorization with sparseness constraints," *J. Mach. Learn. Res.*, vol. 5, pp. 1457-1469, 2004.
- [75] D. Donoho, and M. Elad, "Optimally sparse representation in general (nonorthogonal) dictionaries via ℓ^1 minimization," *Proc. Natl. Acad. Sci.*, vol. 100, no. 5, pp. 2197-2202, 2003.
- [76] R. Peharz, and F. Pernkopf, "Sparse nonnegative matrix factorization with ℓ^0 -constraints," *Neurocomputing*, vol. 80, pp. 38-46, 2012.
- [77] I. Kopriva, M. Popović Hadžija, M. Hadžija, and G. Aralica, "Unsupervised segmentation of low-contrast multichannel images: discrimination of tissue components in microscopic image of unstained specimen," *Scientific Reports*, vol. 5, article no. 11576, 2015.
- [78] The MATLAB File Exchange Central Website. <https://www.mathworks.com/matlabcentral/fileexchange/22088-repeated-measures-anova> [29 October 2016].