

This volume presents papers given at the 3rd and 4th scientific editions of the conference “Methodology and Archaeometry” held in 2015 and 2016 at the Faculty of Humanities and Social Sciences of the University of Zagreb, Croatia. It covers topics in archaeometry and archaeological methodology, which represent an essential part of collecting and processing data, which defines the validity of archaeological interpretation. Contributions explore non-destructive archaeology (geophysics and field survey), different aspects of artifact analysis, and experimental archaeology.

The text brings together new research from scientists from various disciplines based on a range of methodological, analytical and theoretical perspectives, thus providing new insights and approaches, as well as new theoretical and methodological frameworks in contemporary archaeological science.

Ina Miloglav is Assistant Professor at the Department of Archaeology, Faculty of Humanities and Social Sciences of the University of Zagreb, Croatia, where she lectures on the documentation of archaeological methodology, as well as the methodology of processing prehistoric pottery. She has published 34 journal articles, seven book chapters, and the book *Ceramics in Archaeology – Pottery of the Vučedol Culture in the Vinkovci Region*. She also edited the volumes *Artisans Rule: Product Standardization and Craft Specialization in Prehistoric Society*; *Recycle, Ideas from the Past and Back to the Past – Copper Age in Northern Croatia*.

978-1-5275-4475-8
www.cambridgescholars.com

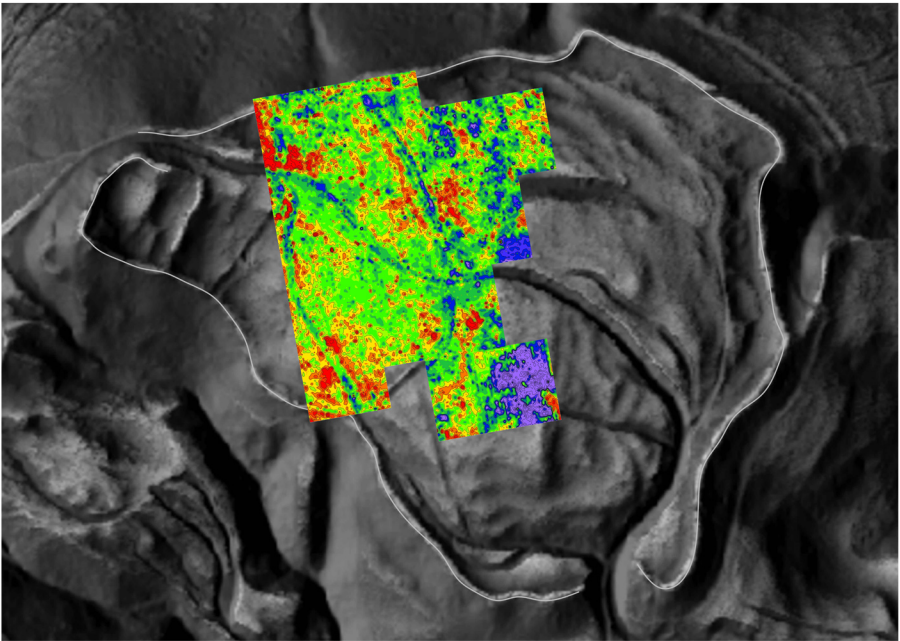
Cover image Results from the in-phase component (units: ppt) recorded with the second receiver of the low-frequency EM probe for Poštela hillfort near Maribor in the Štajerska region of north-east Slovenia (Background Lidar data: D. Mlekuž) © Petra Basar, 2019



Cambridge
Scholars
Publishing



Recent Developments in Archaeometry and
Archaeological Methodology in South-Eastern Europe



Recent Developments in Archaeometry and Archaeological Methodology in South-Eastern Europe

Edited by Ina Miloglav

Recent Developments in Archaeometry and Archaeological Methodology in South- Eastern Europe

Recent Developments in Archaeometry and Archaeological Methodology in South- Eastern Europe

Edited by

Ina Miloglav

Cambridge
Scholars
Publishing



Recent Developments in Archaeometry and Archaeological Methodology
in South-Eastern Europe

Edited by Ina Miloglav

This book first published 2020

Cambridge Scholars Publishing

Lady Stephenson Library, Newcastle upon Tyne, NE6 2PA, UK

British Library Cataloguing in Publication Data

A catalogue record for this book is available from the British Library

Copyright © 2020 by Ina Miloglav and contributors

All rights for this book reserved. No part of this book may be reproduced, stored in a retrieval system, or transmitted, in any form or by any means, electronic, mechanical, photocopying, recording or otherwise, without the prior permission of the copyright owner.

ISBN (10): 1-5275-4475-3

ISBN (13): 978-1-5275-4475-8

TABLE OF CONTENTS

List of Illustrations	vii
List of Tables	xi
Preface	xii
Palaeolithic Artefact Scatter Visibility in the Changing Landscapes of the Western Morava and Resava River Valleys (Serbia)	1
<i>Irina Kajtez and Eric M. Heffter</i>	
Results of a Lithic Trampling Experiment and its Comparison to the Mujina Pećina Lithic Material	21
<i>Katarina Šprem, Ivor Karavanić and Rajna Šošić Klindžić</i>	
Exploring Sources of Knappable Materials as a Starting Point for Locating Pre-Neolithic Open-Air Sites in Dalmatia	35
<i>Šime Ivić, Silvija Lasić, Stjepan Marinković, Katarina Pavlek, Rajna Šošić Klindžić and Josip Halamić</i>	
Trace Evidence of Pottery Forming Techniques: Early Urnfield Culture Vessels	58
<i>Andreja Kudelić</i>	
A Comparison of Handmade and Wheel-made Pottery Technology from the Iron Age Layers of the Cave of Tren (Southeast Albania): Investigating Fabric Composition and Decorative Surfaces through X-Ray Fluorescence Spectroscopy	82
<i>Esmeralda Agolli, Erinda Ndrečka, Brett Kaufman, Hongjiao Ma, Siran Liu and Jing Wang</i>	
Total Lipid Extraction from Archaeological Samples from Roman Sites on the Island of Brač, Croatia	103
<i>Valentina Gluščić, Marina Horvatiček, Kristina Jelinčić Vučković, Ivančica Delaš, Vladimir Stankov and Mateja Hulina</i>	


Geophysical Prospection with the Low-frequency Electromagnetic Method (CMD Mini-Explorer) and Using Integration Analysis of Multidimensional Data.....	122
<i>Petra Basar, Branko Mušič, Matija Črešnar and Hrvoje Potrebica</i>	
Sites Twice Removed: A Case Study from Dalmatia.....	146
<i>Martina Dubolnić Glavan, Igor Kulenović and Neda Kulenović Ocelić</i>	
Radiocarbon Dating of Paper and Parchment in the Zagreb Radiocarbon Laboratory.....	165
<i>Andreja Sironić and Ines Krajcar Bronić</i>	
Proposed Reconstruction of the Face Pot from the Roman Legionary Fortress of <i>Tilurium</i> , South Croatia (Dalmatia).....	178
<i>Zrinka Šimić-Kanaet</i>	
Contributors.....	187
Index.....	194

LIST OF ILLUSTRATIONS

- Figure 1-1a. Major Palaeolithic sites in Serbia and surrounding regions: Middle Palaeolithic sites: 1. Vindija, 2. Velika Pećina, 3. Krapina, 4. Zobište, 5. Lonđa, 6. Šalitrena Pećina, 7. Petrovaradin Fortress, 8. Hadži-Prodanova Pećina, 9. Velika and Mala Balanica, 10. Pešturina, 11. Kozarnika, 12. Temnata Dupka, 13. Bacho Kiro, 14. Mujina Pećina, 15. Crvena Stijena, 16. Bioče, 17. Mališina Stijena, 18. Golema Pešt, 19. Asprochaliko, 20. Klisoura, 21. Tabula Traiana. (Modified from Dogandžić et al. 2014)
- Figure 1-1b. Early Upper Palaeolithic sites: 1. Vindija, 2. Velika Pećina, 5. Lonđa, 6. Šalitrena Pećina, 11. Kozarnika, 12. Temnata Dupka, 13. Bacho Kiro, 20. Klisoura, 21. Tabula Traiana, 22. Crvenka-At, 23. Šandalja, 24. Franchthi Cave, 25. Orlovača and Bukovac caves. (Modified from Dogandžić et al. 2014)
- Figure 1-2. Palaeolithic open-air Sites and lithic surface scatters in Serbia with survey areas circled: 1. Petrovaradin Fortress (MP), 2. Vršac-Crvenka and Vršac-At (UP/Aurignacian), 3. Western Morava open-air scatters (MP and some UP), 4. Samaila-Vlaška Glava (MP), 5. Vrnjačka Banja (RM source, some MP), 6. Kremenac (poss. LP/MP), 7. Radan mountain (MP).
- Figure 1-3. Example of artefact piece-plotting from surveyed field, village of Supska, near Jagodina. (Made by the authors)
- Figure 1-4. Field density data from the Resava survey.
- Figure 1-5. Field density data from the Western Morava survey.
- Figure 2-1. Different types of siliceous rocks used in the trampling experiment. (Photo: K. Šprem)
- Figure 2-2. Experimentally-made lithic artefacts placed in two different quadrants. (Photo: K. Šprem)
- Figure 2-3. Percentage of edge-damage categories present on the artefacts from layers E1 (n=1170) and E2 (n=2726) of Mujina Pećina and experimental trampling (n=40; E1 results modified after Bošnjak 2012).
- Figure 2-4. Percentage of edge-damage types on the artefacts from layers E1 (n=1170) and E2 (n=2726) of Mujina Pećina and experimental trampling (n=40; E1 results modified after Bošnjak 2012).
- Figure 2-5. Pseudo-retouch on one of the pseudo-tools in the experiment (N37). (Photo: K. Šprem)

- Figure 3-1. Map of the study area, showing research locations and archaeological sites mentioned in the text. (Adapted from: Digital atlas of the Republic of Croatia (DARH), GIS Data, Zagreb, 2005; modified by: K. Pavlek)
- Figure 3-2. Topographic maps showing research areas with chert finds: Danilo (top), Baljci (bottom left) and Zelovske Staje (bottom right). (Adapted from: Geoportal DGU, TK25, 2018; modified by: K. Pavlek).
- Figure 3-3. Close-up of chert nodule in Danilo, with macrofossil clearly visible in the upper part of the fractured rock surface. (Coin diameter = 26 mm; photo: J. Halamić)
- Figure 3-4. Danilo-Vrljaci: Lower Eocene chert nodules *in situ*, embedded in foraminifera limestone. (Coin diameter = 24 mm; photo: J. Halamić)
- Figure 3-5. Baljci-roadcut: thin layers of Upper Jurassic light and dark chert alternating with limestone. (Photo: J. Halamić)
- Figure 3-6. Zelovske staje: Middle Triassic chert block with a combination of colours arranged in a banded pattern. (Coin diameter = 26 mm; photo: J. Halamić)
- Figure 3-7. Map of archaeological sites mentioned in the text (compiled after information in: Malez 1966; Marijanović 2005; Perhoč and Altherr 2011; Vukosavljević 2012; Forenbaher and Perhoč 2015; McClure and Podrug 2016). (Author: K. Pavlek)
- Figure 4-1. Location of the Bronze Age archaeological sites from which the ceramic fragments originated. (After: <https://geoportal.dgu.hr/>; modified by: A. Kudelić)
- Figure 4-2. Different forms of fracture and bonding methods (a-e) Kurilovec-Belinščica site, (f-g) Molve-Topolova site. (Photos: A. Kudelić and H. Jambrek)
- Figure 4-3. Breaking patterns indicating slab-building technique: (a-d, f) Kurilovec-Belinščica site, (e) Podvratnec site. (Photos: A. Kudelić and H. Jambrek)
- Figure 4-4. Evidence of rim and base modification: (a-d) Podravina sites, (g) Kurilovec-Belinščica site, (f) Selnica Ščitarjevska site, (e) concentric ridge recorded on bowls from the Kurilovec-Belinščica site. (Photos: A. Kudelić and H. Jambrek)
- Figure 4-5. Traces of concentric grooves on the vessel rim and the base (a) Dejanovića Humke-Bosanska Gradiška (Ludajić 2010: T. IV/3), (b) Mačkovac (Kalafatić 2011: T. 42), (c) Oloris-Dolnji Lakoš (Dular 2002: T. 60/1), (d) Selnica Ščitarjevska (Drawing: A. Kudelić).
- Figure 4-6. Evidence of surface modification (a-b), traces of burnishing (c-d), surface treated with coatings/slip (a, f, e) and conical application

- made by mould (g); (a-c, f) pottery from the Podravina region, (d, e, g) pottery from the Turopolje region. (Photos: A. Kudelić and H. Jambrek)
- Figure 4-7. Selected vessel forms from the early phase of the Urnfield Culture in north-western Croatia divided into groups (a-e) according to vessel type, building technique, and surface treatment. (Drawing: A. Kudelić)
- Figure 5-1. Map showing the location of Tren and prehistoric sites around it.
- Figure 5-2. Handmade fragments. (Drawings: J. Culani)
- Figure 5-3. Wheel-made fragments. (Drawings: J. Culani)
- Figure 5-4. Photos of fragments. (Photo: E. Agolli)
- Figure 5-5. Presence of CaO (wt%) in fabric for handmade and wheel-made pottery groups.
- Figure 5-6. Presence of SiO₂ and Al₂O₃ (wt%) in the fabrics of handmade and wheel-made pottery groups.
- Figure 5-7. Presence of Fe₂O₃ and CaO (wt%) in the fabrics of handmade and wheel-made pottery groups.
- Figure 5-8. Concentration of major chemical elements in fabric for handmade and wheel-made pottery groups, 1.00=100 wt%.
- Figure 6-1. Position of archaeological sites, island of Brač, Croatia. (Author: K. Jelinčić Vučković)
- Figure 6-2a. Amphora types, site provenance, datation, usage and sample info.
- Figure 6-2b. Amphora types, site provenance, datation, usage and sample info.
- Figure 6-3. Mass ratio (%) of 5 common fatty acids in lipids from amphora samples: C16:0, palmitic; C18:0, stearic; C18:1, oleic; C18:2, linoleic; and C20:4, arachidonic acid.
- Figure 7-1. Sites mentioned in the text. (Background map: © 2014 Esri)
- Figure 7-2. Results from the *in-phase* component (units: ppt) recorded with the second receiver of the low-frequency EM probe for Poštela hillfort with noted positions of the test pits. (Background Lidar data: D. Mlekuž)
- Figure 7-3. Comparison of the results of conductivity mapping (mS/m, third receiver in HCP configuration) of barrows at the sites of Habakuk, below Poštela, and Vetovo–Kagovac sites. Dashed lines mark the approximate dimensions of the barrows which were documented on site.
- Figure 7-4. Conductivity (*quadrature*, mS/m) and magnetic susceptibility (*in-phase*, ppt) results collected with three different receivers compared with the results of a discrete data integration method.

- Figure 7-5. Plan of the ditch (above) and the comparison of the conductivity results (mS/m) measured with two different coil configurations (the second and third receivers in HCP and VCP coil orientation).
- Figure 8-1. The study area: Nin and Privlaka, North Dalmatia, Croatia. (Made by the authors)
- Figure 8-2. Changes in land-use pattern. Aerial photographs of the study area (Sabunike–Busje) in Privlaka, 1968. (<https://ispu.mgipu.hr/>)
- Figure 8-3. Changes in land-use pattern. Aerial photographs of the study area (Sabunike–Busje) in Privlaka, 2011. (<http://geoportal.dgu.hr/>)
- Figure 8-4. Visibility of sites in coast profile. Architecture preserved *in situ*. (Photo: M. Dubolnić Glavan)
- Figure 8-5. Visibility of sites in coast profile. Exposed cultural layers. (Photo: M. Dubolnić Glavan)
- Figure 8-6. Sites visible as finds deposited on clearance features. Drystone wall. (Photo: M. Dubolnić Glavan)
- Figure 8-7. Sites visible as finds deposited on clearance features. Cairn. (Photo: M. Dubolnić Glavan)
- Figure 8-8. Spatial distribution of find deposits on clearance features and plot walls. A possible area of origin is marked – an illustration. (Base map: <http://geoportal.dgu.hr/>, made by the authors)
- Figure 9-1. Summary of all ^{14}C results presented as calibrated ^{14}C data probability distributions. The  symbols show age intervals within 1σ and 2σ confidence.
- Figure 10-1. The original fragment. (Photo: Z. Šimić-Kanaet)
- Figure 10-2. Drafting the shape of the reconstructed face beaker. (Photo: Z. Šimić-Kanaet)
- Figure 10-3. a) The beginning of base production: centering; b) Making the opening and pulling up the walls of the beaker. (Photo: Z. Šimić-Kanaet)
- Figure 10-4. a) Determining the position of fragments on the exterior surface; b) Applying face shapes to the surface of the beaker. (Photo: Z. Šimić-Kanaet)
- Figure 10-5. a, b) Forming face shapes on the surface of the beaker. (Photo: Z. Šimić-Kanaet)
- Figure 10-6. The face beaker after the process of reconstruction. (Photo: Z. Šimić-Kanaet)
- Figure 10-7. The face beaker after firing. (Photo: Z. Šimić-Kanaet)

LIST OF TABLES

- Table 1-1. Proposed correspondence of Western Morava terraces identified by Rakić (1977) with Marine Isotope Stages (MIS). (Modified from Kajtez 2015)
- Table 1-2. Artefact statistics from the Western Morava and Resava river valleys.
- Table 1-3. Differences between Western Morava and Resava.
- Table 2-1. List of experimental results consulted in this paper.
- Table 2-2. A quick overview of experiment variables.
- Table 2-3. A number of edge-damaged artefacts and pseudo-tools from the experimental trampling (E. T.) and layers E1 and E2 of Mujina pećina (E1 results modified after Bošnjak 2012).
- Table 4-1. A simplified representation of the building and shaping techniques and surface treatments recorded on the vessels dated to the early phase of the Urnfield Culture.
- Table 4-2. Non-characteristic and characteristic features of the forming techniques examined. (Published ceramic material from the immediate vicinity of both micro-regions mentioned in the text was also taking to consider.)
- Table 5-1. General background on the pottery samples under investigation.
- Table 5-2. Showing the quantitative presence of major chemical elements in the ceramic fabric.
- Table 5-3. Showing the qualitative presence of major chemical elements on pigments, with background data from the fabrics.
- Table 6-1. Amphora sample types with presumed purpose of use and with summarized results of fatty-acid analysis. The most abundant fatty acid in the sample is marked with *, the 2nd most abundant with **, etc.
- Table 9-1. Results of ¹⁴C dating (conventional ¹⁴C age and calibrated age spans within a 1σ confidence interval with probabilities >5 %) and $\delta^{13}\text{C}$ values. For sample identification the following codes are used: Z is sample identification code, and A is AMS preparation number, of the Zagreb Radiocarbon Laboratory; GU is the Glasgow University (SUERC) number, and UGAMS is the University of Georgia number.

PREFACE

The book *Recent Developments in Archaeometry and Archaeological Methodology in South-Eastern Europe* presents papers from the 3rd and 4th scientific conferences *Methodology and Archaeometry*, which were held during 2015 and 2016 at the Faculty of Humanities and Social Sciences of the University of Zagreb, Croatia. As the goal of the conference is to entice interdisciplinarity, critical thinking, new insights and approaches, as well as new theoretical frameworks in contemporary archaeological science, it has resulted in the ten scientific papers presented in this volume. The papers focus on various kinds of archaeological issue in the fields of archaeological methodology and archaeometry. From non-destructive methods which help us to better understand archaeological sites and landscapes and to preserve them, through different aspects of material analysis by using different analytical methods and techniques, to experimental archaeology which enables us to explain and reconstruct technological processes in the past. The various research and case studies in this volume bring together scientists from different disciplines (archaeologists, geologists, chemists, physicists) who give new insights and approaches, as well as new theoretical and methodological frameworks in contemporary archaeological science. Using different analytical techniques, approaches and tools, they encourage us to improve archaeological interpretation based on collected data and to give a more objective and comprehensive picture of past processes.

In order to create a volume of high scientific quality, each of the conference papers has been reviewed by two anonymous reviewers, to whom I am especially thankful for their comments, opinions and remarks. I also wish to thank all the authors who contributed to this book, as well as Croatian Archaeological Society for their support and Andy Tomlinson for proofreading of the manuscript. At the end special thanks goes to Cambridge Scholars Publishing for their interest in publishing the papers from the *Methodology and Archaeometry* conference and for their assistance during the process of editing this volume.

—Ina Miloglav